

# ***Hubitools*** **CATALOG**

---

EURO-QUALITY SYSTEM



ISO 9001

HUBITTOOLS.COM

2021 - 2022

## Battery

**HU34012**

**START & STOP BATTERY & ELECTRICAL SYSTEM ANALYZER WITH PRINTER**



### Specially designed for Start & Stop systems

Exclusive design by Hubitools

Two battery technologies : AGM and EFB

EFB technology is used on « low efficiency » vehicles that feature Start & Stop systems but only have essential basic comfort equipments

AGM technology is used on vehicles with extra equipments, such as devices for recovering brake energy

Hubitools launches its own new generation START & STOP BATTERY & ELECTRICAL SYSTEM ANALYZER that allows testing the following systems that features both AGM and EFM technologies:

Fiat - S&S // VW - BlueMotion // Ford - ASS (AutoStartStop) // Mercedes-Benz - BlueEfficiency // Opel - ecoFLEX start/stop // PSA - e-HDI // Renault - Energy // Seat - Ecomotive

Tests 6V-12V batteries and 12V-24V volt charging & starting systems

Integrated printer // Digital screen // Operating range: 40 ~ 2000 CCA

Tests EFB, VRLA / GEL , AGM Flat Plate, AGM Spiral and Regular Liquid batteries in 2 seconds

**HU34039**

**USB BATTERY & ELECTRICAL SYSTEM ANALYSER**



Tests all types of Start&Stop and standard batteries !

Standard size paper rolls

Possibility of inserting a CR2032 battery for date & time memory

Handy design with large illuminated digital screen

3 functions : Battery test, System Test (Alternator) and « in vehicle » test (Battery test and System test combination)

Tests 12V batteries and 12V-24V charging systems (FLOODED, AGM FLAT PLATE, AGM SPIRAL, VRLA/GEL, EFB)

6 Languages (EN, FR, ES, DE, IT, PT)

Rating&range : CCA/SAE: 40~2000 // EN: 40~1885 // DIN: 25~1120 // IEC: 30~1320 // JIS: By Battery Type No. //

CA/MCA: 50~2400

**HU34034**

**BATTERY & ELECTRICAL SYSTEM ANALYSER**



All the functions of our high-end HU34012 without the printer

Very competitive price

Tests all types of Start&Stop and standard batteries !

Handy design with large illuminated digital screen

3 functions : Battery test, System Test (Alternator) and « in vehicle » test (Battery test and System test combination)

Tests 12V batteries and 12V-24V charging systems (FLOODED, AGM FLAT PLATE, AGM SPIRAL, VRLA/GEL, EFB)

10 Languages (EN, FR, ES, DE, NL, IT, PT, CE, RU,TU)

Rating&range : CCA/SAE: 40~2000 // EN: 40~1885 // DIN: 25~1120 // IEC: 30~1320 // JIS: By Battery Type No. //

CA/MCA: 50~2400

**HU34045**

**WIRELESS BATTERY TESTER**



Ideal For Smart Alternator Test  
(Smart Battery Charging System)

4 Modes in 1 Tester :

• LIVE MONITORING DYNAMIC TEST (0-36v)

BSM Battery System Management

Smart Alternator

• Battery test

• Cranking test

• Charging system test

# Battery

**HUBT111****6 AND 12V BATTERY TESTER**

Light and compact, for testing 20 to 150Ah batteries  
Instant analysis of VRLA / GEL / AGM and SLI batteries (results in 1 second)  
Powered directly from the battery to be tested

**LT446100AMP****ANALOGUE BATTERY LOAD TESTER**

True 100 AMP load capacity  
Test 6 and 12V batteries up to 1,000CCA

**HU50888****DIGITAL BATTERY LOAD TESTER AND CHARGING SYSTEM ANALYSER**

Bright LED digital display  
Easy to use : push one button to complete the test within 10 seconds  
Tests 12V battery ratings of 200 to 1000CCA range  
Tests 12 volt charging system and starter motor system

## Battery

HU34027

BATTERY CHARGER/ MAINTAINER/ POWER SUPPLY 1.5/10AMP



9-stage charging algorithm

All in one, 12V charging mode:

SLI, AGM SPIRAL, AGM FLATPLATE, GEL, VRLA, CAL/CAL and START-STOP LEAD ACID battery & LFP batteries

Start & Stop EFB/AGM

Lead-acid batteries and Lithium batteries

Power supply mode (10AMP Flash Mode & Show Rooms)

Save deeply discharged battery (Repair Mode as low as 2V)

Protection : over-charging, Spark free, Reverse polarity, Temperature compensation, IP65

Full automatic



Start (A) Stop



## Battery

**HU34015**

**DIGITAL BATTERY CHARGER/MAINTAINER 220-240V - 5 AMP**



12V switching power digital battery charger and maintainer

AC voltage : 220-240V

Charge current : 5 Amp

Application : 12V SLI/VRLA / GEL/AGM, CAL/CAL & SPIRAL batteries

Features IP65 water resistant (dust/splash/rain protection), auto-polarity, spark free & over charging protection  
170x73x48mm

**HU34018**

**4 WATT SOLAR POWERED MAINTAINER WITH OBD2 CONNECTOR**



Portable solar generator built into a protective platform

Designed to charge 12V lead-acid batteries with no additional running costs

Allows you to maintain batteries at a ready-to-start level with no external power

Bypass diode minimizes power drop during shade

Shatterproof tempered glass for superior durability

Easy to install and maintenance free

Includes: 12 Volt DC plug, alligator battery clamps, suction cups to easily mount the solar panel to the vehicle's windshield and OBD2 connector

No main power or wiring required, requires only daylight to work, charges even if the weather is overcast or dull

Working temperature : from -37°C to 79°C

## Battery

**HU34021**

**NEW GENERATION LITHIUM BOOSTER AND POWERBANK - 600A**



Uses 18000mAh high capacity & high power battery that is fast charging and has low self-discharge.  
Cycles can reach 1000 times  
Features include 12V emergency start, LED flashlight and 2 USB ports for device use and charging and 19V Laptop output  
Three (3) lighting modes: Standard, Strobe, SOS  
Multiple built in safety features  
Includes patented technology  
Dimensions: 230mm L x 85mm H x 28mm W  
Weight: 700g  
Start current : 300A  
Peak current : 600A  
Capacity : 66.6Wh

**HU34026**

**OBDII DATA SAVER CABLE FOR HU34021**



This cable allows you to transform your booster into a data saver. The booster will supply a steady 12V tension via the OBDII plug and avoid loosing data (seat, GPS, radio) during battery replacement

**HU34036**

**1200A - BOOSTER 4-CELLS BATTERY TECHNOLOGY**



4-cells battery technology enables to start high compression engines such as big 12v diesel engines  
Double overheating protection to avoid any damage : heavy duty Smart Jump cables & battery thermistor  
Smart jump cables also protected against reverse polarity, short circuit and anti-reverse current  
4 secondary outputs for quick charging laptops, phones, in-car electronics and even car batteries  
LED flashlight with 3 modes: Lighting - Flashing - SOS  
Type-C input (5V3A 15W) for quick booster charge  
Heavy-duty body for garage use  
New style storage pocket for easier in&out handling  
Kit includes jump cables, charger, Micro USB / Micro USB C Type cable  
Dimension : 227mm L x 100mm H x 32mm W  
Weight : 650g // Starting Current : 500A // Peak Current : 1200A // Battery Lithium Iron Phosphate : 16000mAh  
Lifetime  $\geq$ 1000 battery cycles

## Battery

HU34035

MULTIFUNCTION LITHIUM JUMP STARTER 1200A



Lithium Iron Phosphate (LFP)

Jump start 12V and 24V vehicles

Running/Charging USB Devices

For power supply to 12V vehicle products or 12V electronics such as inflator, cooler, OBDII memory saver, etc.

LED flashlight

Kit includes multi-pin USB cable and plug charger

Dimension: 292x233x79mm / Weight: 2680g

Starting Current: 12V 600A/24V 300A / Peak Current: 12V 1200A



## Battery

HU35001

DATA SAVER



Prevents data loss in onboard electronic system when changing the battery  
12V DC  
Dual connection option  
Surge protection  
Reverse polarity warning



HU34011

OBD2 DATA SAVER

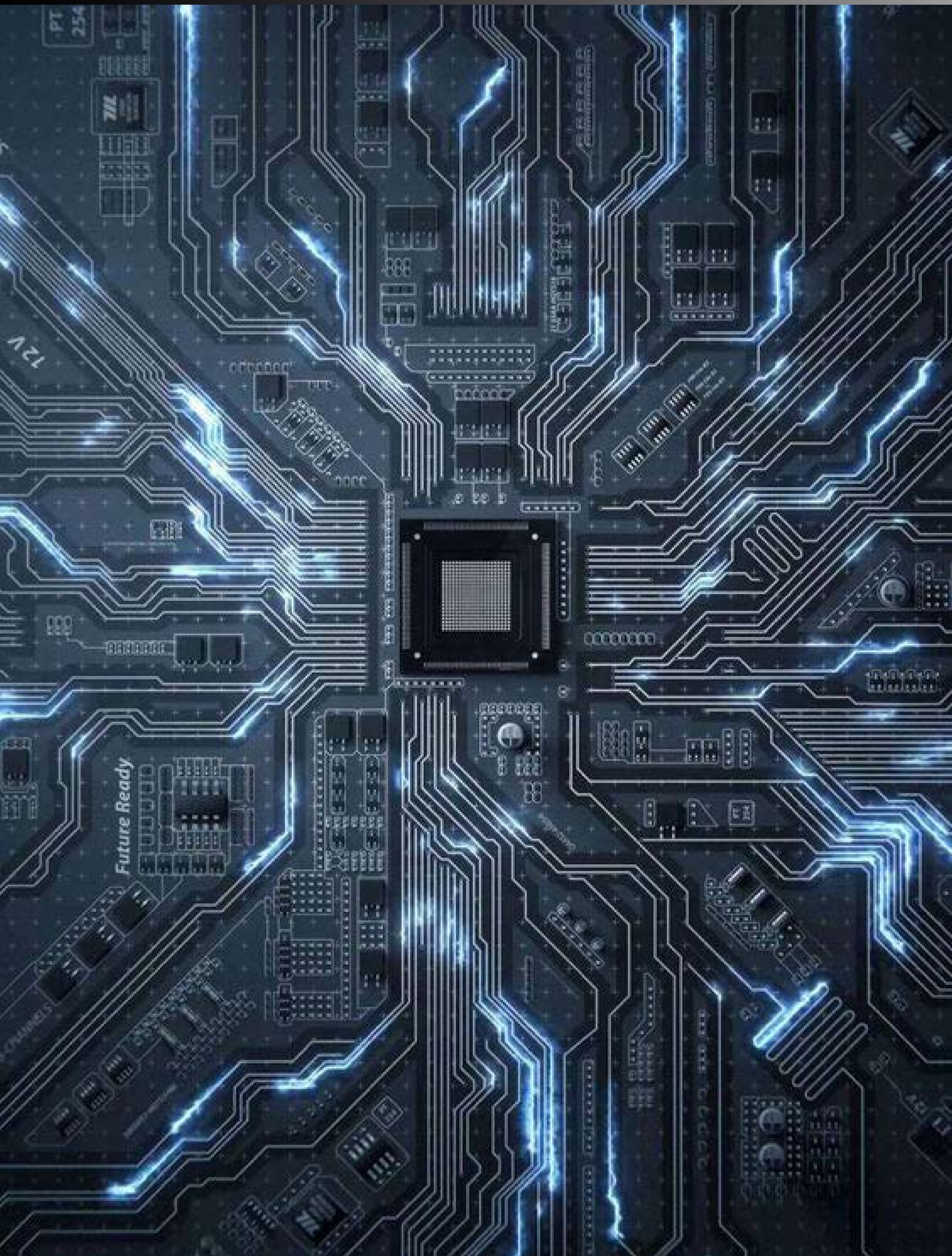


Prevents data loss in onboard electronic system when changing the battery  
Connect directly to the vehicle's OBD2 port or cigarette port  
High capacity, rechargeable sealed lead acid battery 12V 4,5A  
LED light shows good connection  
Surge protection  
Reverse polarity warning  
Power on-off switch





# Battery



## Bodywork

HU33003

HVAC ULTRASONIC LEAK DETECTOR 2 IN 1



High sensitivity and quality

Ideal for A/C leaks

Other applications: inspect and check vacuum and compressed air leaks (compressed air/gas installation ...), electrical systems (insulation breakdown, arcing, relays,...), LPG system, tire leaks, tightness of passenger compartment...

Rotating volume switch

Ultra visible LED bar

THE KIT INCLUDES:

A receiver for audio feedback (LED indicator)

An ultrasound transmitter (for container cracks, door seals, any air or water leaks within the vehicle...)



HU14001

ULTRASONIC LEAK DETECTOR



Quickly find air and water leaks within the vehicle.

Transmitter gives out a specific frequency of ultrasonic sound waves that do not travel through glass or metal

Easy to use (no driving required)

Audible and visual indication of leak

Set includes a transmitter and a receiver and improved headphones

Works on 9V batteries



## Bodywork

**HU14005**

**CORDLESS RECHARGEABLE HOT STAPLER PLASTIC REPAIR KIT**



Makes structurally sound repairs of damaged plastic parts

Avoid replacing expensive parts if not needed

Cordless

Precision-engineered tool that helps you make solid, permanent repairs of breaks, cracks and tears in rigid or flexible plastic parts

Ideal for automotive (bumpers, broken locator pins, door panel clips and tabs...) but also for power sports, hobby and industrial applications

Makes strong and flexible finished repair

FEATURES :

An adjustable head for multiple angles // LED Light // LED charging // Low battery indicator lights // 240V charger included // 3 staple types (V-Shaped 0.6mm / U-Shaped 0.6mm /U-Shaped 0.8mm), 100pcs/bag

**HU14010**

**MINI HOT STAPLER USB**



Rechargeable with USB cable: battery Li-ion 3.7V 8 AMP

Makes structurally sound repairs of damaged plastic parts

Avoid replacing expensive parts if not needed

Precision-engineered tool that helps you make solid, permanent repairs of breaks, cracks and tears in rigid or flexible plastic parts

FEATURES :

LED Light

LED charging / Low battery indicator lights

240V charger included

3 staple types (V-Shaped 0.6mm / U-Shaped 0.6mm /U-Shaped 0.8mm), 100pcs/bag

**HU14009**

**CORDED HOT STAPLER PLASTIC REPAIR KIT**



Makes structurally sound repairs of damaged plastic parts

Avoid replacing expensive parts if not needed

Power source : AC 220-240V / Power consumption: 220-240V, 50/60Hz.,12.6W

Precision-engineered tool that helps you make solid, permanent repairs of breaks, cracks and tears in rigid or flexible plastic parts

Ideal for automotive (bumpers, broken locator pins, door panel clips and tabs...) but also for power sports, hobby and industrial applications

Makes strong and flexible finished repair

FEATURES:

3 staple types (V-Shaped 0.6mm / U-Shaped 0.6mm /U-Shaped 0.8mm), 100pcs/bag

HU31031

COMPLETE SET FOR PLASTIC REPAIR



All you need for plastic repair !

- Everything you need for automotive plastic repair in one kit
- contents include: hot staple tip, plastic welding tip (max temp 500°C), plastic welding tip with welding rod guide, 12 plastic welding rods 150mm (ABS, PP, PE, PS), 3pc stainless steel wire mesh (50 x 100mm) & flat alloy steel staples (50pcs 0.8mm & 50pc 0.6mm).
- Complete plastic repair kit with rechargeable Li-ion battery
- No cable. very mobile with a high runtime.
- Its heating speed makes work easier: no need to heat the iron 10-15 minutes before starting work. Here it heats up in 10-15 SECONDS to melt plastic and in one seconde for stapling



## Bodywork

HU44001

### UNIVERSAL WINDSCREEN WIPER ARM PULLER SET



Contains many accessories (including a universal puller) that will assist with the removal of wiper arms that are:

Rusted or deep-set on the drive-shaft  
With integrated screen-wash nozzle such as VW, Audi, BMW  
Stuck for other reasons

HU44016

### AIR VACUUM DENT PULLER



Sliding hammer to ease dent without damaging the paint surface  
Comes with 3 suction pads (75mm / 100mm / 125mm) and one hook  
Weight : 4,7kg  
Material : Steel & plastic  
Sliding hammer : 1,22kg  
Air inlet : ¼"

HU14002

### COATING THICKNESS TESTER



Dual technology features an automatic selection of magnetic induction or Eddy current measurement techniques  
Ideal for :

Non-magnetic coatings (e.g. paint, zinc) on steel  
Insulating coatings (e.g. paint) on no-ferrous metals  
No-ferrous metals coatings on insulating substrates  
Two measuring modes: CONTINUE and SINGLE mode  
Two working modes: DIRECT and GROUP mode  
Statistic display: AVG, MAX, MIN, NO., S.DEV  
One point calibrating, two points calibrating and basic calibrating easily  
Memory for 400 readings (80 DIRECT and 320 GROUP readings)  
Delete single readings and all group readings easily  
High alarm and Low alarm for all working mode  
Low battery, error indication

## Chassis

**AB70897**

**STEERING RACK END WRENCH**



Use on steering racks to service inner tie rod ends  
Use directly on the vehicle  
Diameter 33 to 41mm

**AB70950**

**HEAVY DUTY WRACK WRENCH**



Use on steering racks to service inner tie rod ends, directly on the vehicle  
NEW larger size to provide coverage for domestic and import light trucks and SUV's  
Diameter 38mm to 48mm

**HOR905**

**MASTER MACPHERSON STRUT TOOL**



ACME threaded rod  
Steel bar with ball-bearing catch latches to help lock coil in place  
Forged construction for repetitive use  
Made in USA

**HU43004**

**FWD HUB BEARING SERVICE KIT**



Universal kit to service most front wheel drive bearings  
Also allows the installation of silemblocks (bushes)

## Chassis

**HUSM25**

**SOUND LEVEL METER**



Monitors the sound levels from traffic noise, cars, motorcycles, alarm systems and workplace machinery  
Digital display with analogue graph  
40dB to 130dB  
Accuracy: +/- 2dB  
Fast & slow response selectable

**STE06400**

**NOISE AMPLIFIER**



Use this tool to detect :  
Defective piston rings or bearings  
Air leaks  
Grinding and clicking sounds...

**STE06606**

**ELECTRONIC STETHOSCOPE: COMPLETE SET**



Designed to allow the user to listen to amplified sounds through a professional set of headphones during a road test.  
Clamps can be fixed onto many vehicle locations for road testing when diagnosis is difficult.

USE FOR :  
Road test diagnosis  
Under bonnet  
Fuel injectors  
Kit contents a receiver, 6 microphone clamps, a noise amplifier with metal probe, headphone

## Chassis

**STE91925**

### SMARTEAR LITE HARDWARE KIT



Electronic stethoscope to be used with smartphone (free app available)  
Will transform your iPhone®, iPod touch®, iPad® or Android into a state of the art Sound Detection Tool allowing for ease of locating and pinpointing those hard to find squeaks and rattles  
User friendly interface and intuitive operation  
Sound level reading displays average, peak, and real-time values  
Sound level readings are displayed in either Analog or Digital  
KIT INCLUDES:  
3.5mm 4 Pin Dual Plug Connector  
2pc. Wired Sound Wand w/ Detachable Handle & 120cm Cord (Mono)  
Aluminum Probe w/ Rubber Tip  
Comfort-fit Ear-buds w/ Mesh Braid w/o Volume or Mic (Stereo)

**STE91927**

### SMARTEAR1 HARDWARE KIT



Electronic stethoscope to be used with smartphone (free app available)  
Will transform your iPhone®, iPod touch®, iPad® or Android into a state of the art Sound Detection Tool allowing for ease of locating and pinpointing those hard to find squeaks and rattles  
User friendly interface and intuitive operation  
Sound level reading displays average, peak, and real-time values  
Sound level readings are displayed in either Analog or Digital  
Selectable Audio Sound or Vibration input modes  
KIT INCLUDES:  
3.5mm 4 Pin Dual Plug Dongle  
2pc. Wired Sound Wand w/ Detachable Handle & 120cm Cord (Mono)  
Aluminum Probe w/ Rubber Tip  
Comfort-fit Ear-buds w/ Mesh Braid w/o Volume or Mic (Stereo)  
Sensor Clamp w/ 40cm Cord (Mono)

**AB70267**

### MECHANICS STETHOSCOPE



Provides a fast and easy way to locate noises in engines or bearings and other moving parts  
Plastic earphones shut off outside noises  
Aluminium alloy probe/needle for finding the exact location of specific noises  
High quality surgical PVC & rubber parts for increased sound definition  
Instrument is shockproof  
Ideal for pinpointing unusual vibrations or suspected leaks (valves, piston rings, gaskets, etc.)



## Chassis

STE78684

BLUETOOTH CHASSIS EAR



The Steelman®PRO Bluetooth® CHASSISEAR® - NVH is a noise, vibration, and harshness detection tool that uses Bluetooth® wireless technology along with a Windows® or Android™ device to help identify and diagnose unidentified noises. The intuitively designed software provides easy pinpointing of noises from multiple locations. Sound files can be saved and e-mailed to be reviewed by the customer or for further analysis by other technicians.



STE97216

WIRELESS ELECTRONIC STETHOSCOPE



Quickly pinpoints source and location of noise during a road test, even on long vehicles (such as trucks, buses...).

Clamps can be fixed onto springs, shocks, body mounts, brakes, engine blocks, etc.

INCLUDES:

A receiver with four channels

4 transmitters

4 sensor clamps



## Chassis

HU42025

### LUGDRILLER® - LOCKING LUG NUT REMOVAL KIT



The Lugdriller® is the Ultimate tool to remove the most difficult locking lug nuts in the quickest and safest way.

Over the years the locking lug nuts have been dramatically improved.

Their design is more and more complex and the material itself harder and harder.

Removes the most difficult locking lug nuts

Professional kit : made of solid material that can work on the hardest lugs

Very easy and quick to use : 4 to 8 minutes per wheel only!

UNIVERSAL : Works on all types of sockets from any brand // Also works on all modern cars with oddly shaped lugs // Also works on damaged lugs

KIT INCLUDES:

4 Nylon internal centering guides // 3 metal external centering guides // 1 metal centering guide for free turning lugs // 2 x special ultra hard drill // 4 x extractor // 1 impact extractor holder // 1 impact extractor remover

HU42066

### THE SPECIAL WHEELS SOCKET SET!



Works on Kia/Hyundai, Mercedes, Maybach, Opel and Smart

Square drive : 1/2"

Ideal to complete Lugdriller kit

One set for most of special wheel sockets

HU42067

### WHEEL HUB GRINDER SET



Quick and easy removal of rust and dirt from contact surfaces of wheel hubs, brake discs and drums before re-assembly

This operation helps to prevent the bad balancing and aftersales problems

To be used with pneumatic, cordless and corded drilling machines

Each pad is securely screwed on the holder (no Velcro)

For wheel hubs with or without stud bolts (diameter of grinding zone 40 Wear-resistant: approx. 50 vehicles per wheel

Usable even in humid conditions

Competitive price

## Chassis

HU43012

DOSIL - SILENT TIRE DEFLATOR



Equipped with a filter cartridge that reduces the noise from 115db to 85db!

Its retractable screwdriver allows the technician to dismount easily and with one hand only the tire valve

Avoids the ejection of the valve during its dismounting

Does not increase deflating time

Not only protects the technician who uses it but also all the people around Deflating operation by uns-

crewing the tire valves (Car, Truck, bus) exposes technicians to noises that can lead to deafness. The

Silent Tire Deflator patented by INRS allows to reduce noises emissions during tire deflation.

The risk of the noise : Remember a deflating tire reach easily 115db! And above 115 dB , very brief sounds immediately cause irreversible damage.

Up to 80-85 decibels, the cells (and our auditory sensation) do not suffer. Above this level, there are hairs which are gradually destroyed and then disappear totally: the cells dies and there is no longer any auditory sense: this is deafness.

HUS202

TREAD DEPTH GAUGE



Allows to check tyre wear, brake shoe...

From 0 to 25mm

Resolution: 0.01mm

LCD display

Zero setting at any position

Quick and efficient reading

Metric/inch system interchange

STE99719

LOW PROFILE TIRE REMOVAL TOOL



Ideal for low profile and run-flat tires

30° angled handle design and extra long length provide increased leverage

Super-grip knurled handle for increased grip

Durable high strength carbon steel construction

Trapezoidal design to avoid bending

ADVANTAGES:

Reduces strain on users hand and wrist

Provides technician better control of the tool against stiff sidewalls

Helps protect against damaging expensive wheels

# Hubitools

## Cooling System

AB70586

COMBUSTION LEAK TEST KIT



Checks cooling system to see if combustion gas is present  
AB70587 : replacement test fluid  
Can be used with AB70802 cooling system tester

AB70587

REPLACEMENT TEST FLUID FOR AB70586



Replacement test fluid for AB70586

MI4534

UNIVERSAL COOLING SYSTEM TEST KIT



Pressure testing for leaks in automotive cooling systems  
High-volume hand-operated pump builds pressure quickly to locate leaks  
Universal cooling system adapter replaces more than 20 individual adapters for cars, vans, light- and heavyduty trucks  
Patent-pending adapter cam mechanism ensures an air-tight seal with radiator and coolant bottle necks  
Compact one-piece adapter design fits conveniently in tool box  
Large, easy-to-read 65mm diameter gauge includes clearly indicated pressure test zones  
Convenient push-button valve safely relieves pressure when testing is complete  
Packaged in durable custom-molded case  
KIT INCLUDES:  
Hand pressure pump w/ 65mm diameter gauge and push-button pressure release valve  
Universal radiator test adapter

## Cooling System

AB70802

UNIVERSAL COOLING SYSTEM PRESSURE TESTER



Attaches to all Cooling Systems without adaptors  
Nylon & glass fiber non conductive pump  
Suits both bayonet and thread type filler necks  
Pressure release valve with drain hose prevents coolant spills  
Use on passenger vehicles, light and heavy duty vehicles, motor cycles and marine applications  
Pressure Pump: 0-30 psi (0-2Bar)  
Suits neck diameter up to 50mm (2 inch)  
Detachable tube  
Easy private branding (MOQ 250pcs)  
User-friendly "Bladder -> System valve"  
Coloured moving parts



AB70809

UNIVERSAL COOLING SYSTEM PRESSURE AND CAPS TESTER



Attaches to all Cooling Systems without adaptors  
Check the system  
With the inflatable bladder sealing system that attaches to all passenger and light commercial vehicles (universal use, no need of any adaptors)  
Check the caps  
With 6 unique double ended adaptors that suit the most common caps  
Locate leaks from:  
Head gaskets  
Radiator and heater cores  
Welch plugs and housings  
Water pumps and hoses  
Nylon & glass fiber non conductive pump  
Detachable tube  
Easy private branding (MOQ 250pcs)



## Cooling System

HU919

COOLING SYSTEM REFILLING TOOL



Purge trapped air from cooling system to eliminate the possibility of engine damage due to overheating  
Performs vacuum leak test on cooling system  
Refills cooling system free of trapped air quickly, efficiently and with no mess  
Universal rubber body covers most vehicle radiators  
Muffler dampens noise output during operation  
Working pressure: 5~8 bars  
Max pressure: 8 bars  
Air consumption: 165L/min  
Inlet: 1/4 bsp



AB70880

COOLING SYSTEM REFILLING GUN



Eliminates airlocks during refilling using deep vacuum technology  
Unique multi-fit cone eliminates the need for additional adaptors (universal use)  
Easy and fast to use



# Cooling System

**HU13002****ILLUMINATED REFRACTOMETER**

Backlight system for easy reading, even in dark places.

To check:

Coolant : from 0 to -50°C

Battery : from 1.1 to 1.4Kg/L

Windscreen cleaner : from 0 to -40°C

AdBlue® separated scale from 20 to 40%

**HU404****AUTOMOTIVE REFRACTOMETER (PLASTIC)**

To check:

Coolant : from 0 to -50°C

Battery : from 1.1 to 1.4Kg/L

Windscreen cleaner : from 0 to -40°C

AD Blue separated scale from 30 to 35%

Plastic model (HU404) and metal model (HU414)

**HU414****AUTOMOTIVE REFRACTOMETER (METAL)**

To check:

Coolant : from 0 to -50°C

Battery : from 1.1 to 1.4Kg/L

Windscreen cleaner : from 0 to -40°C

AD Blue separated scale from 30 to 35%

Plastic model (HU404) and metal model (HU414)

# Automotive Electrical Circuit

**AB70617****MULTIMETER**

Specially designed for all automotive applications  
Automatically turns off after 10 min

Accessories: test and temperature probes, test clamps, inductive clamp for tachometer

FUNCTIONS:

Voltage : AC (3,2V - 1000V) DC (3,2V - 750V)

Current : AC (32mA - 10A) DC (32mA - 300mA)

Resistance from 320Ω to 320KΩ

Frequency from 0,01Hz to 32kHz

Diode check

RPM from 0 to 12,000

Temp. measurement (-20°C - +1370°C)

**HU201****DIGITAL MULTIMETER**

MEASURES:

Voltage DC : 600V

Voltage AC : 600V

Current DC : 10A

Current AC : 10A

Resistance : 20M Ω

Diode check : test current of 1mA maximum, open circuit voltage 2.8V DC typical

Continuity test : audible signal will sound if the resistance is less than approximately 30Ω

Temperature: from -20°C to 760°C

**HU31011****3 IN 1 POCKET MULTIMETER**

Digital multimeter

CAT III 1000V

200mA resettable fuse protection

Voltage DC : 600V

Voltage AC : 600V

Current DC : 200mA

Current AC : 200mA

Resistance : 40M Ω

Diode check

Continuity check

Non-contact voltage detection (100V - 600V)

Integrated flashlight



# Automotive Electrical Circuit

**HU9800T****DIGITAL CLAMP METER WITH INTEGRATED DISPLAY**

AC/DC Current to 600A (ideal for automotive applications)  
AC/DC Voltage to 600V  
Resistance, temperature  
Continuity beeper and diode test  
Auto Power Off

**HU31010****MULTIMETER PRO FOR HYBRID VEHICLES**

CAT III (1000v) safety rating for hybrid vehicle circuits and all other automotive applications  
Higher amperage test ranges, up to 20 Amps  
RPM measurement for automotive engines with 2 to 10 cylinders using the inductive Pick-up  
Oversized high contrast LCD display with backlight  
14 Functions including DCV, ACV, DCA, ACA, Resistance, RPM (Tach), Frequency, Dwell angle, Duty cycle, Temperature (IR Temperature) (°C/°F), Capacitance, Continuity and Diode Check  
Data Hold, auto Power Off, over-range indication  
Fused current inputs/overload protection on ranges  
Measures milliseconds pulse width to test on-time of fuel injectors, idle air control motors and electronic transmission controls

**HU31009****VAT VOLTAGE AND CONTINUITY TESTER**

Voltage, continuity, polarity and phase tester with flashlight  
Large backlit LCD display with bargraph  
LCD AC/DC voltage indication: 6V, 12V, 24V, 50V, 120V, 230V, 400V, 690V  
Polarity detection shown on the LCD display  
Continuity test with audible tone  
Phase rotation test  
Integrated flashlight  
IP64 housing dust- & waterproof  
Overvoltage class CAT III 1000V/ CAT IV 600V  
VAT self-test button

# Automotive Electrical Circuit

**HU31019****THE AMP HOUND**

Designed to drastically reduce the amount of time needed to determine the amount of current in a fused circuit  
Can detect as small as 0.005 AMP  
Ideal to locate parasitic draw  
No need to remove fuse risking a reset of the circuit (GPS code, seat adjustment, system interface sleep mode...)  
Makes it possible to very quickly "sniff out" any currents that are flowing in an entire Fuse Block in only a few seconds  
Works on the following fuses :  
Mini (ATM) 5 A, 7,5 A, 10 A, 15A, 20 A, 25 A, 30 A  
Standard (ATC) 5 A, 7,5 A, 10A, 15 A, 20 A, 25 A, 30 A  
Maxi 30 A, 40 A, 50 A

**HUCF02 - HUCF02S****AUTOMOTIVE CURRENT TESTERS 20A**

Maximum measuring voltage: 48V  
Maximum current: 20A

**HUCF08****AUTOMOTIVE CURRENT TESTER 80A**

Ideal to diagnose current leaks (consumption)  
Maximum measuring voltage: 48V, max current: 80A  
Large LCD display with bar graph  
Peak hold and data hold function  
Zero setting for accurate measurement  
For large, standard and mini blade type fuses

# Automotive Electrical Circuit

**HU31030****CORDLESS SOLDERING IRON**

Warm-up time: 10-15 seconds

Runtime: 35 min real

Can also be used connected to the mains (charging)

Lithium Battery = 500-700 charge cycles

No 220V => no risk associated with the current.

30W: high power for a small device.

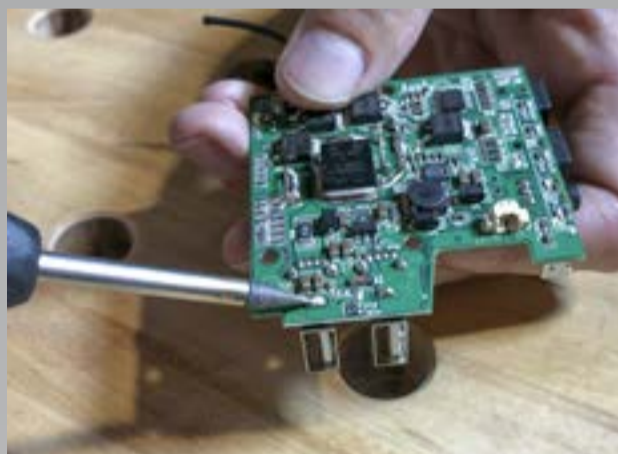
Unlike gas soldering irons, this does not involve any flame. Fire is not permitted in garages for obvious safety reasons.

No adjustment as with gas irons.

No ordering and shipping of gas (speaking logistically, shipping gas is problematic. e.g. by plane)

No cable. Very mobile with a high runtime.

Precision tip for fine solders (connectors, etc.)



## Automotive Electrical Circuit

HU285

INTELIPROBE



Energize components  
Polarity test  
Continuity test  
Short circuit protection  
6V-24V DC



HU31014

AUTOMOTIVE DIGITAL INTELIPROBE 0-24V



Detects currents from 0V to 24V DC  
Activate the components with positive or negative current thanks to its 6m cable  
Determine the polarity and circuit circumstance (short-open / green or red LED)  
Short circuit protection  
Test the continuity of the circuit  
Locate missing cylinders  
Measures high tension frequency of ignition system  
Audible warning  
Digital LCD display  
Integrated LED light, ideal for work in dark places  
Se branche sur la batterie du véhicule  
Ignition in kV



# Automotive Electrical Circuit

**HU31001****CORDLESS CIRCUIT TESTER**

Suitable for testing DC circuits with voltage from 3 and 28V  
No ground wire or clip required  
Tester illuminates LED, buzzes and vibrates on contacting live wire  
Computer-safe for use around delicate engine management systems  
Supplied fitted with 2 X long life alkaline batteries

**HU31015****AUTOMOTIVE CIRCUIT VOLTAGE TESTER**

Test common automotive circuits up to 12 volts  
Bright 360 degree visual indication + audible signal  
Alligator clip connects to ground  
Long flexible test lead  
Quickly test automotive circuits for proper voltage

**HU31012****12V AUTOMOTIVE RELAY TESTER**

Quickly and accurately test 3 categories of terminal electro-mechanical relays used on most cars  
Interrogate and identify an unknown relay terminal configuration then self-configure its own internal circuitry to perform all required test functions automatically  
Unit automatically indicates test results with a red and a green performance lights  
Contact resistance threshold : 200 Milliohms

**HU31017****RELAY CIRCUIT PRO**

Can test an entire circuit from the battery to the component in question  
Determine if the relay itself is functioning properly  
Instantly determine the problem within the circuit  
No need of a multimeter : just push the button  
Features easily accessible ports for use with other diagnostic tools for further diagnostic  
Can be used as a remote control starter in engine work like compression testing, distributor or cam shaft adjusting, to run the compressor ...  
Kit includes tester, 6 popular relay connectors, 1 universal relay lead - Patent pending  
Works with both 12 and 24 volts systems

# Automotive Electrical Circuit

**HU45101****DIAMOND GRIP TERMINAL CLEANERS**

This patented 3-piece, pro-series set features three different size tips specifically designed and custom engineered to fit and clean most male/female flat pin-type connectors.

- Highly durable with mild abrasive coating
- Pivoting-handle design for added versatility
- Works for both male and female connectors on flat (spade) pin-type terminals
- Designed to clean and enhance electrical connections safely
- Reduces diagnostic guesswork
- Increase overall harness life
- Comes with a large, medium and small size cleaner for the most common electrical connectors
- Includes a premium-quality holster with magnetic clasp
- Patented

**HU45102****FEMALE BULLET CONNECTOR CLEANER SET (12PCS)**

Super-Hard, Flexible, and Diamond-Coated For Cleaning Small, Round, Female Electrical Pins  
This 12-piece set of Diamond Micro Round Files are specially designed to remove corrosion from small-type Cannon, Deutsch, Bullet, NATO, Weather Pack and other small round terminal connections.

- Strong but flexible
- Specifically engineered sizes designed for small round connector types
- Diameter sizes range from 0,75mm to 3,02mm and 127mm long
- For use in general filing applications such as steel, aluminum, plastic, brass, etc.
- Comes in a premium-quality holster with magnetic clasp
- Individual sizes are marked and available for replacements
- File Diameter Sizes: 0,75(2X)-0,98(2X)- 1,29-1,48-1,76-2,03-2,26-2,52-2,78-3,02mm

**HU45103****EU TRAILER TERMINAL CLEANERS & PIN WEAR GAUGE**

- 3 pieces set of single pole cleaners designed for the precise removal of corrosion and debris
- Cleans and resizes male and female 7 poles and 13 poles European trailer terminal connections
- Quickly and precisely removes debris and corrosion
- Works on trailer light assemblies
- Extends harness life
- Maintains continuity to prevent circuit failure
- Premium quality holster with magnetic clasp
- Patented

**HU45104****DIAMOND COATED FLEXIBLE FLAT FILES**

- The 3-pieces, pro series feature highly durable, super hard, abrasive diamond coating for cleaning and enhancing electrical connections.
- Nonslip, high-visible ergonomic handle
- 3-pieces set covers a wide range of contact sizes
- Enhances connections and extends contact life
- Reduces diagnostic guesswork
- Ultra-thin, flexible files for added functionality
- For industrial and Automotive contacts and relays
- Material: Diamond coated steel
- Large, medium and small file

# Automotive Electrical Circuit

**HU31025****SCOPE +****THE ULTIMATE AUTOMOTIVE TESTER**

Solely designed for automotive electrical circuit's trouble shooting!

Easy and simple to use no extensive electrical knowledge needed.

Fully protected. Will not cause damage even accidentally using OHM measurement to measure Volts.

Measures:

Amps draw (Mini, ATC or Maxi) without removing the fuses from the Fuse Box

Voltage (max. 50VDC)

Cranking volts with auto HOLD function

Resistance [Ohms] (from 0.0  $\Omega$  up to 1.0 M $\Omega$ )

Frequency with peak to peak volts (up to 20 KHz)

Duty cycle (%)

Continuity test + Diode/ LED test

**HU31035****SENSOR SIMULATOR****THE IDEAL TOOL TO SIMULATE AND ACTUATE THE OUTPUT SIGNAL FROM AUTOMOTIVE SENSORS: FREQUENCY, VOLTAGE AND TEST SEQUENCES**

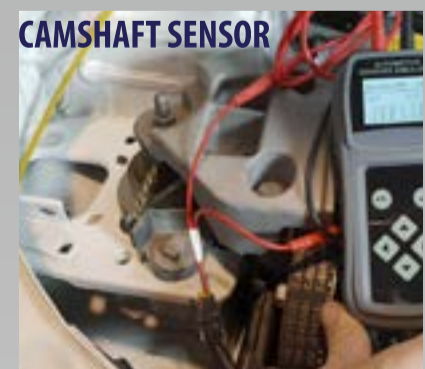
It will help you in your diagnostic when scan tool diagnosis ends. Sensors, injector actuators will inform the scan tools that there is a problem, but Sensor simulator will allow the technician to know if the faulty operation is a faulty sensor a problem in the car computer, a defect in the wiring...

The device is specially used for wiring tests. It can simulate the correct signal and compare it to the scan tool

Allows you to eliminate the need to replace sensors that work perfectly fine (investment quickly pays for itself)

Simulator functions

1. Simulated Resistance
2. Simulated Voltage

**EGR SENSOR****ABS SENSOR****CAMSHAFT SENSOR**

# Automotive Electrical Circuit

**HU31021****NEEDLE TEST PROBE SET**

High quality design for the professional automotive engineer

EACH KIT COMPRISES OF:

A pair of double insulated silicone test leads one end terminating in a straight fixed shrouded plug, the other in a right angled plug; both compatible with all standard 4mm instrument sockets

A pair of cable piercers for intrusive measurement taking; ideal when back probing is not an option

A pair of slim back probing probes. These incorporate a 'spring steel' prod which allows greater flexibility and less damage when attempting to override the rubber seal on some connectors

The silicone leads can withstand high temperature, it can also withstand the heat of such things as hot manifolds and soldering iron tips

Ultra thin lead for multipins connector

**HU31022****DIAGNOSTIC TEST LEAD SET**

Complete lead kit for Automotive diagnostics.

Content almost all connection leads for connecting to sensors, valves, connectors, injectors ...

All leads are arranged properly in pairs "Male & Female" and by terminal sizes

Includes ATC adapter Mini and Maxi fuses and ATC Current loop to be used with an Amp Clamp

Includes Piercing Extra Sharp Probes . This innovative design gives enough retention force to pierce through the wire's insulator

New variable resistor of with 10K $\Omega$  (instead of 5K $\Omega$  ) dial indicator. Quick and easy way of resistance adjustment without the help of a multi-meter during simulation of resistance related sensing devices

Airbags simulator : Used to confirm SRS Airbag power input by connecting it first to check for any short circuit before installing new SRS





# Automotive Electrical Circuit

**HU45001****TERMINAL TOOL SET (23PCS)**

A comprehensive terminal tool set that incorporates up to the minute products for use on standard terminals and vehicle computer connectors  
Includes special tools for coolant sensors, wiring harnesses and terminal blocks on Chrysler, Hyundai, Kia and Mitsubishi vehicles

**HUS100****AUTOMOTIVE SHORT AND OPEN CIRCUIT FINDER**

For all vehicles and cables from 6 to 24V DC  
Locates short and open circuits  
Circuit tracing



# Brakes

**HU507A****UNIVERSAL BRAKE BLEEDING KIT****CONTENTS:**

Vacuum brake bleeder 1l with unique rubber adaptor

2 fluid filling bottles:

HU508DA : fix nozzle

HU508D : adjustable nozzle

**HU507M****BRAKE BLEEDER FOR MOTORCYCLES**

HU507G : vacuum brake bleeder 1l

Double ended fitting with unique rubber adaptor

Designed for the brake bleeding of motorcycles

# Brakes

**HU42018****DOUBLE IN-LINE FLARING TOOLS**

Allows the user to simply and easily flare brake thin walled steel tubing or copper tubing  
Works with a ratchet, wrench or air wrench (non included in the kit)  
Low profile and allows the user to work in tight spaces, on or off of the vehicle  
Standard SAE and DIN flares  
For brake pipes with diameters of 4.75mm and 6mm  
Full range of die and punch sets available  
Simple to use (easier to use than the current model flare tools)  
Self centring pipe location

**HUS210****DIGITAL BRAKE GAUGE**

From 0 to 100mm  
Resolution: 0.01mm  
LCD display  
Zero setting at any position  
Quick and precise reading  
Metric/inch system interchange

**HU395401****HOSE CLAMP PLIERS WITH FLEXIBLE CABLE FOR REMOTE ACCESS**

Unique jaw design fits all typical automotive clamps up to 51mm  
Flexible cable (L = 630mm) allows to work in hard to reach places  
Extra-heavy duty 2mm cable  
Easy to replace cable  
Pivoting jaw-piece

**AB70915****UNIVERSAL FRONT BRAKE PISTONS SPREADER**

A lot of modern cars are mounted with electrical hand brakes. The AB70915 is the ideal tool to push back the pistons of those type of brakes.  
Fast and easy to use  
Powerful : generates over 215kg of force  
Universal adapter : fit single, twin or quad piston  
Prevents damage to pistons, seals or calipers (no pliers, no screwdrivers)  
All pistons are retracted at the same time - no piston getting out

## Brakes

HU11002

BRAKE FLUID TESTER



DOT 3, 4, 5.1  
Accurate and quick analysis of the moisture content in the brake fluid  
Simple to calibrate for more accuracy, very easy to use  
LED read-out  
Adjustable test probe for easy access

HU11003

POCKET BRAKE FLUID TESTER



Integrated circuitry checks moisture content of fluid by measuring the electrical resistance and comparing it with acceptable limits  
Easy calibration check using water  
3 LED read-out (green = < 1.5% ok / yellow = from 1.5% to 3% / red = >3% wrong)  
Red LED warns when low battery  
Battery 1.5V AAA included

HU11010

BRAKE FLUID BOILING POINT TESTER



Power supply by the vehicle battery(12V)  
Precision testing of the boiling temperature of the brake fluid (wet boiling point) in °C and °F  
DOT3/4/5 compatible  
No adjustment to be made by the user, no selection of fluid.  
A single control button -> very simple in the garage  
Clear indication of the recommended boiling T° for DOT 3/4/5 on the screen.  
Auto-protected system: If immersion in the fluid is not deep enough it is safe.  
Intelligent system: If the vehicle battery is too flat or overcharged, it will warn the user. If an internal element is faulty, it will also warn the user.  
Removable electrical heating element / available as a spare part.  
Can be washed with clean water -> allows the boiling point of water (100°C) to be tested to check the accuracy of the equipment.  
One test = max. 30 seconds

# Brakes

**HU11004****MASTER CYLINDER ADAPTOR KIT**

Suitable for use with most pressure brake bleeders  
Includes European cap adaptor, multi vehicle caps, BMW/Audi, Nissan, Toyota, Mazda & Honda  
This kit contains master cylinder adaptors and manufacturer specific caps  
Adaptors fit 99% of current master cylinder reservoirs  
Supplied in a custom molded case  
A syringe is included to empty or top off the master cylinder

**HU11006****AUTOMATIC BRAKE BLEEDER 12V - 6BAR**

Easy, simple and reliable.  
Portable and self-powered  
Compatible with ABS/ESP systems  
12v powering with reverse polarity warning  
Stainless steel body  
Electrical pump (0 to 6 Bar) with automatic power off valve  
Regulator from 0 to 6Bar  
5l reservoir with visible level and min level indication  
Auto power OFF when min level // Large reservoir opening for easy cleaning  
12V power cable with jack (L: 4m)  
Power cable for brake fluid with quick coupling system (L: 4m)  
Delivered with fluid refill reservoir with chain and universal screw-on adaptor (compatible with 85% of vehicle fleet)

**HU2010****UNIVERSAL CAP FOR HU11006**

## Brakes

**AB70852**

**VACUUM BRAKE BLEEDER - 800ML**



Design with unique patented built in safety valves to prevent accidental fluid spray and spillage  
Uses compressed air to generate deep vacuum to bleed old fluid and air from hydraulic brake system  
Compact size allows easy operation within wheel arch area  
Quick connect coupler for hose interchange as required  
Universal rubber fitting suits most brake bleed screws  
Float valve shuts vacuum down when container reaches full to prevent dangerous brake fluid spray if capacity is accidentally exceeded  
Internal shut off valve closes when not in use to prevent fluid spills when stored  
Reduces repair times increasing productivity and profit  
Convenient hanging hook and quick release trigger allows hands free operation  
Clear drain hose provides visible inspection of old fluid during bleeding

**AB70854**

**VACUUM BRAKE BLEEDING KIT - 800ML**



Uses compressed air to generate deep vacuum to bleed old fluid and air from hydraulic brake system  
Auto refill unit maintains correct fluid level during bleeding process  
Reduces repair times increasing productivity and profit  
New design with unique patented built in safety valves to prevent accidental fluid spray and spillage

**AB70895**

**AUTOFILL BRAKE BLEEDER AUTOMATIC REFILLER**



Automatically refills the brake fluid reservoir during brake bleeding  
Base plate retaining clip provides positive attachment to all master cylinder reservoir types  
Positive venting system supplies unbroken, continual fluid flow  
Height adjustment allows user to maintain correct fluid level on all reservoir types  
On/Off tap allows installation and storage without drips or spills  
Suitable for use on any level controlled re-filling application (eg clutches)  
Container capacity: 600ml

## Brakes

**MI6830E**

### MITYVAC BRAKE BLEEDER AND FLUID EVACUATOR



- High quality, professional unit
- Allows clean, quick fluid evacuation
- Variable thumb throttle holds desired flow rate
- Includes 3 semi-rigid probes with various diameters + 1 brake bleeding tube
- Compressed air operation
- Integrated 1.8 litre capacity fluid collection reservoir
- Quick-disconnect coupler for accessories
- Quiet, muffled exhaust
- Automatic overflow prevention

**MI6844**

### MITYVAC FLUID DISPENSING SYSTEM + BRAKE BLEEDER



- Large 5 liters fluid capacity
- Fluid is dispensed under pressure for smooth continual flow
- Integrated manual pump adds air above the fluid level to prevent aeration
- Internal pump components are sealed against exposure to fluids
- On/Off and flow control valve are conveniently located near fluid output
- Utilizes push-to-connect, quick-change style accessory connections
- Pressure gauge indicates fluid dispensing pressure
- Integrated safety and manual pressure relief valve
- Pressurized reservoir allows the operator hands-free movement to the bleed screws

**KIT INCLUDES:**

- Mityvac pressure bleed system (MI6400)
- Universal master cylinder adapter (MI00804)

**MI8020**

### MITYVAC NEW GENERATION HAND BRAKE BLEEDING KIT



- Bleeds hydraulic lines of most automotive brake systems
- Quick and clean

**HU45118**

**LI-ON SCREWDRIVER**



ULTRA COMPACT ! FAST ELECTRIC APPROACH AND HAND TIGHTENING !

- Works on rechargeable 3.6V 900m/Ah Li-ion battery
- Designed to automatical stop and lock when reaching 2Nm of torque allowing user to safely finish the tightening by hand torque: 11Nm
- Quickrelease bit holder
- Fit well in the hand
- LED light
- Micro USB Charging port
- Delivered with USB Charging cable
- Delivered with HEX to 1/4 adaptor
- Continously operating time for 40 mins when full charged
- Full recharging time: 60 mins

**HU45115**

**10 PCS ROUNDED FASTENER EXTRACTOR SET (8-17MM)**

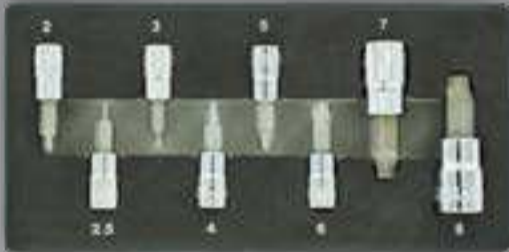


Extractor inserts for rounded nuts, Fit on wrenches and sockets (14mm and 19mm)

- Grips fastener even 85% rounded
- Also suitable for turning fasteners with no damage
- 8 9 10 11 12 13 14 15 16 17mm
- Sits firmly in a wrench, without sliding through

**HU45116**

**8PCS HEX EXTRACTOR SET-1/4"DR 2,2.5,3,4,5,6MM-3/8" DR7,8MM**

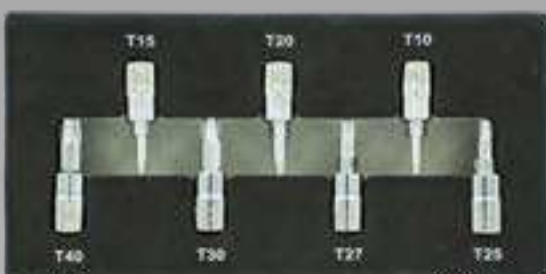


LAST CHANCE HEX EXTRACTOR !

- Ideal tools to takes out hex fasteners up to 85% rounded
- Can also be used on new fasteners
- 1/4" drive sizes: 2, 2.5, 3, 4, 5, 6mm
- 3/8" drive sizes: 7mm, 8mm

**HU45117**

**7 PCS TORX EXTRACTOR BIT SET 1/4" DR T10, T15, T20**



LAST CHANCE TORX EXTRACTOR !

- Ideal tool for removing damaged TORX screws
- Can also be used to install new fasteners
- 1/4" drive sizes: T10, T15, T20, T25, T27, T30, T40



# Hand Tools

**HU45119****3PCS RATCHETING WRENCH & RATCHETING DRIVER SET**

UNIQUE FINGER WRENCH !

DOUBLE JOINT DESIGN !

- Size available : 8mm & 10mm, 11mm & 13mm, 1/4" drive & Bit Hex
- Ultra compact to reach screws and nuts in very tight areas
- Ratchet style for a easy use
- Double articulation

**AB70862 - 63 - 68****IMPACT BARS 3/8" /1/2" /3/4"**

Loosen rusted or frozen bolts with high impact force  
 Produces 8 x torque multiplication with each hammer blow  
 No compressed air required for operation  
 Precision impact  
 Bi-directional - use to loosen and tighten fasteners  
 Swivel head aids with operation in limited access situations  
 Swivel head allows speed brace action to spin fasteners off after initial loosening  
 Impact absorbing composite handle  
 Use with impact sockets and driver bits

**AB70866****POWER BAR HAND IMPACT WRENCH FOR CARS (1/2")**

Reduces service time on vehicle with limited crankshaft bolt access  
 Ideal for Honda crankshaft bolt removal  
 Generates up to 600 ft. lbs. of force which exceeds most 1/2" impact guns  
 Bi-directional force loosens or tightens bolts  
 Saves repair time – no need to remove parts to access the crankshaft bolt or harmonic balancer pulley  
 Use where impact guns wont fit  
 Impact force 'shocks' bolts loose  
 No compressed air required for operation  
 Use with impact sockets  
 SPECIFICATIONS :  
 Length: 550mm  
 1/2" square drive

**AB70867****POWER BAR HAND IMPACT WRENCH FOR TRUCKS (3/4")**

Heavy duty 3/4" drive  
 Provides high impact force for breaking loose fasteners used in many industrial applications  
 Ideal for use in onsite heavy equipment service and repair  
 No compressed air required  
 Bi-directional for loosening or tensioning fasteners  
 SPECIFICATIONS :  
 Length: 580mm  
 3/4" square drive

## Engine

HU507G

MINI VACCUM FLUID CLEANER FOR INJECTOR HOLES



Ideal for cleaning the injectors holes during or after injector extraction  
Vacuum cleaning is better than pressure blowing on Common Rail engines to avoid splashes on the engine



AB70892

FLUID EVACUATION UNIT (1.5L )



Uses compressed air to generate deep vacuum to evacuate most fluid types (Engine and Differential Oil, Transmission and Brake Fluid, Coolant)  
Reduce repair times, increase productivity/ profit  
Design w/unique patented built in safety valves to prevent accidental fluid spray and spillage  
1m suction hose w/ clear section for viewing flow  
Brake bleeder hose included  
Quick connect coupler hose for interchange  
Convenient hanging hook and quick release trigger allows hands free operation  
Float valve shuts vacuum down when container reaches full to prevent dangerous brake fluid spray if capacity is accidentally exceeded  
Internal shut off valve closes when not in use to prevent fluid spills when stored



## Engine

HU35025

UNIVERSAL DIGITAL PRESSURE TESTER



THE HU35025 REPLACES DOZENS OF STANDARD DIAGNOSIS KITS IN JUST ONE SET  
This kit can measure Diesel and Petrol compression, Oil pressure, Turbo pressure, Cooling system pressure, AD Blue pressure, Fuel low pressure, Vacuum pressure and Particle filter pressure and as an option, Fuel high pressure.

KIT INCLUDES:

Tester

7" Color TFT display with resistive touch panel

Battery: LiPo 3,7V / 2000mA

USB smart battery charge with led indicator

PC connection by USB port

ABS enclosure with rubber bumper (Hubitools design)

All screws are mounted on brass inserts

1/4 thread brass insert at back to fix suction cup, etc...

Possible recalibration

User-friendly touchscreen



Compression  
PETROL &  
DIESEL



Oil  
pressure



Turbo  
pressure



Cooling  
system  
pressure



AD Blue  
pressure



Fuel low  
pressure



Vacuum  
pressure



Particle  
filter  
pressure



## Engine

**HU35026**

**DIESEL HIGH PRESSURE KIT**



Made in Germany 2000 Bar hoses

Easily & safely test the diesel common rail pressure

Thanks to this set, the mechanic will be able to safely test the diesel common rail pressure, both in line ("in seriewith engine running") and for direct pump pressure (Cranking the engine)

Unlike simply having the pressure information with the sensor of the car (this sensor may have an issue), our set provides all the hardware (special sensor, plugs, hoses) to perform a very precise and accurate test in association with our digital tester HU35025 (or HU35020). The hoses included in the set will allow to measure and diagnose most usual common rail engine.

Kit includes a 2000bar sensor, a sensor plug for direct pump pressure, 2x M12 x 150 hoses for most common applications and a retrieving reservoir



**HU35028**

**90° COMMON RAIL ADATERS (6PCS)**

IDEAL FOR CONNECTING IN TIGHT AREA

• This set, in association with the HU35026 will allow to test the diesel high pressure of most popular cars in the market. (Delphi, Siemens, Bosch and Denso pumps)

• One end of the adapters always has a M12x150 thread to fit our hoses. The other ends are :

HU35028

- M12x125 (2x)
- M14x150 (2x)
- M14x100 (1x)
- M16x100 (1x)



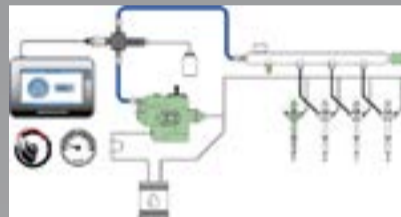
## Engine

**HU35030**

**COMMON RAIL CAPS SET**



Used in association with HU35026, this set will allow to close injectors fuel inlet directly on the common rail. The purpose of this operation is to identify if an injector is leaking or not  
Works for 3, 4, 5 and 6 cylinders engines  
Kit includes  
6x M12x150 plugs and 6x M14x150 plugs



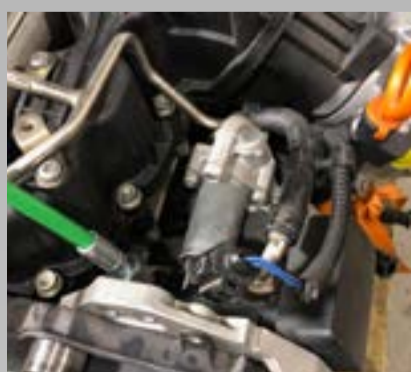
**HU35031**

**COMMON RAIL DUMMY REGULATOR SET**



This set, used in association with HU35026, will allow to bypass the pump's regulator and measure the pressure to diagnose any regulator or pump issue

After observing the weak pump pressure : Simply remove the regulator and choose the right dummy plug to bypass and seal the port.  
If the pressure comes back to normal, the regulator causes the loss of pressure.  
If the pressure stays too low, the pump is defective. This test is recommended by manufacturer of high pressure pumps  
Kit includes 8 different dummy to seal any regulator ports



**HU41010****DIESEL INJECTOR SEAL EXTRACTOR**

Removal of a diesel injector seal that is completely clogged and stuck in the housing  
Slide hammer 1000 grams to remove the most difficult seals  
Integrated hexagonal socket in the slide hammer to screw the extractor into the seal (left-handed thread)  
Conical remover with double thread entry  
Provided with two removers: One for light vehicles (LV) and the other for light utility vehicles (LUV)  
No risk of parts dropping into the cylinder  
No adjustment  
Very easy to use  
Very quick  
High quality equipment for professional use

**HU41039****UNIVERSAL INJECTOR SEAT CLEANING SET**

This set will allow the technician to make a perfect job before placing the new injector!

Cleaning the injectors holes after the extraction is extremely important.

KIT INCLUDES :

- 2 metal brushes Ø 20mm and 25mm for injector hole cleaning
- 2 front brushes for injector seat cleaning
- 1 front brush extension
- 2 seal plugs to close the injector hole while cleaning
- 1 seal plug holder to place and remove the plug
- A sanding kit (paper and paper support)

**HU41055****UNIVERSAL INJECTOR PULLER**

Single universal kit that enables all types of moderately frozen or caked injectors to be removed without removing the electrical part, even on the latest vehicles.

For Denso, Siemens Bosch and Delphi common rail or piezo injectors from 1999 to 2017

Avoids having to remove the electrical part of the injector and thus avoid significant additional costs due to an extremely strong threaded shaft of the same size as the diesel oil inlet coupling to which the extractor is attached

The kit also includes two couplings (M12 and M14) in the event that the original coupling cannot be removed

Two ways of extracting the injector:

by rotating (handle)

by rotating AND axial extraction (mass to inertia) in the most difficult cases

**HU41045****VIBROSHOCK®**

Vibroshock® is the ideal tool to untighten frozen screws, nuts or glow plugs without any damage. This kit must be used with an Air-hammer mounted with a pressure regulator (not included)

PATENT PENDING

APPLICATIONS:

Brake screws // Exhaust screws // Rounded lugs // Glow plugs // Clamp-on injectors...

THE KIT INCLUDES:

1 x Vibro-shaft 3/8" square drive

1 x Articulated wrench

Special Impact Sockets with internal edge 8, 9, 10, 11, 12, 13, 14mm

The goal of the HU41045 Vibroshock® is to avoid any breakage due to an excessive torque or an impact. It is what happens the most often when you use an impact wrench on small diameter screws, bolts, threads.

**HU41050****UNIVERSAL GLOW PLUG TIPS PULLER M8, M9 & M10**

Enables broken glow plug tips stuck in the cylinder head to be easily removed

The kit comprises 4 easily identifiable guides

The tap, drill bit and extractor holders are fitted to the body of the original plug and slide in instead for perfect centering

Self-centering industrial taps

The size of the drill bits and the shoulder of their holder prevents any risk of drilling or tapping too far into the cylinder head without prior measurement

In the event of the tips being flared in the cylinder head, the kit has an ejector that enables the tip to be pushed back into the cylinder before retrieving it with the appropriate magnet included in the kit.

**HU41051****UNIVERSAL DIESEL GLOW PLUG PULLER**

Minimal space needed for use : ideal when glow plug compartment is not easily reachable

Enables glow plugs broken in the top of the cylinder head to be easily removed without any damage

Usable in narrow engine bay and engine with glow plugs on the firewall's side

High quality material for professional use!

Unique design of Electrode puller to tear out the longest part of the electrode as possible

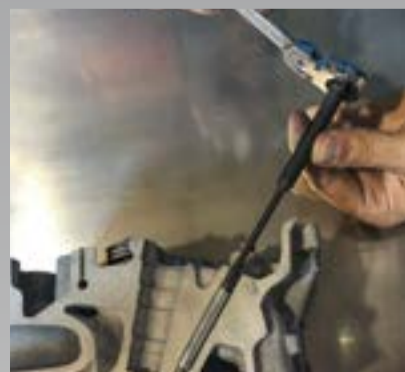
EASY TO USE:

The kit comprises 1 electrode puller and 1 electrode reinforced drill with 2 guides

It comprises 2 special centered mills with one mill support that prevent any damage to the head

A tap and a slide-hammer extractor to pull out the broken glow plug

3 refreshing taps : M8 , M10x100 & M10x125 with Hex Drive to be used with any ratchet and self centering feature



## Engine

**HU41058**

**GLOW PLUG THREAD REPAIR KIT M8, M9, M10X100, M10X125**



This kit is designed to repair the engine glow plug threads M8, M9, M10 x 100 & M10 x 125 quickly, professionally and permanently . It fits perfectly modern vehicles with very little space and access to glow plugs.

Each tool (reamers & Taps) is self guided !  
No need for glue or thread seal  
Ream ! Tap ! And replace !  
The kit includes:

2 Cylinder head reamers: 9mm and 11mm  
4 Special taps 4 mounting tools  
4 Spare Thread repair inserts of each size M8 (short & long) ; M9; M10 x 100; M10 x 125



### Inserts

**HU41058-17 / HU41058-18 / HU41058-19 / HU41058-20 / HU41058-21**

**HU41058-17**  
M9 x 100



**HU41058-18**  
M10 x 125



**HU41058-19**  
M10 x 100



**HU41058-20**  
M8 x 100 Long



**HU41058-21**  
M8 x 100 Short





# Engine

**HU35006****MULTIVOLTAGE GLOW PLUG TESTER**

The Multivoltage Glowplug Tester is the ultimate tool to test the status of diesel glow plugs. It will indicate whether there is an open circuit or a short circuit or if the glow plug is in a good state. In this last case, it will also display the actual resistance of the glow plug for the user to evaluate whether or not the glow plug is nearing an out of specification state.

Universal: works on all type of voltage available on the market

No glow plug removal needed

Easy to use

Results are easy to read

Incorporated light

Works on 2 AAA batteries

**HU41004****UNIVERSAL INJECTOR SEAT CLEANING SET**

Use to reface the seat by eliminating the build up of carbon deposits and the effects of corrosion

KIT INCLUDES:

5 cutters SKD11 quality:

15mm universal flat

17mm flat for Delphi and Bosch injectors (BMW/PSA/Renault/Ford)

17mm angled for Fiat/Iveco and Ford

17mm\*19mm flat for Bosch injectors (Mercedes CDI)

17mm\*21mm angled for Fiat/Iveco

1 guide

1 T-handle

**HU41005****DIESEL INJECTOR SEAL EXTRACTOR**

Removes stuck copper injector base seals

Adjusts easily to inner diameters from 6,40 to 9,50mm

Adjustable depth of the expandable collet

Usually used in conjunction with HU41004 seat cutter set

**HU41008****BOSCH INJECTOR DISMANTLING TOOL 1/2"**

Suitable for removing the internal part of Bosch injector

10mm max Tamper Proof bit

## Engine

**HU41009**

### GLOW PLUG REMOVAL SET (9PC )



Universal set for M8 and M10 glow plugs (VW-Audi, Mercedes, Opel, Peugeot, Renault etc.)

Allows dismantling of broken glow plugs

THE KIT INCLUDES:

Torx socket for electrodes removal

Guides (2pcs) and 3.5mm straight drills (2pcs) for electrode drilling

2 stage drill bit 9 X 4.2 for M10 glow plugs

2 stage drill bit 7 X 4.2 for M8 glow plugs

Drill bit support

1/4 tap for puller spindle

M8 tap for M8 glow plug thread reface

M10 tap for M10 glow plug thread reface

Ratchet tap wrench

Puller spindle (2pcs)

**HU41035**

### FLEXIBLE DRILL BIT EGR CLEANER SET (3PCS)



Designed to cut through rock hard carbon deposits in the EGR passage without removing the intake manifold

The shaft is made of tough spring steel that provides unbelievable flexibility

THE SET INCLUDES 3 SIZES (LENGTHS), ALL WITH 5MM DIAMETER.:

230mm

300mm

540mm

**HU12015**

### DIESEL PRIMING AND BLEEDING KIT



For bleeding or priming diesel systems (with no booster pump)

For connection in-line with the vehicles low pressure delivery system

The clear pipes allow any air bubbles in the system to be seen

Time saver

Ideal for VW - Mercedes - PSA - Renault - Fiat - Opel - Rover - Ford...

For higher performance connect a vacuum brake bleeder to the special bleed screw

## Engine

**HU8865**

**LASER INFRARED THERMOMETER (-50°C-1000°C)**



Precise non-contact thermometer  
Two laser points to a single spot when the unit is at the optimal distance from the target  
Temperature range : -50°C to 1000°C  
Unit selectable (C°/F°)  
Accuracy : +/-2%  
Distance ratio : 30:1  
Emissivity adjustable  
Ideal for exhaust system, air-conditioning, cylinder temperature, brake temperature, cooling system temperature  
Batteries included  
Automatic Data Hold  
Set high and low alarms  
Trigger lock



**HUDT8861**

**LASER INFRARED THERMOMETER (-50°C-550°C)**



Precise non-contact thermometer  
Two laser points to a single spot when the unit is at the optimal distance from the target  
Temperature range : -50°C to 550°C  
Unit selectable (C°/F°)  
Accuracy : +/-2%  
Distance ratio : 12:1  
Emissivity adjustable  
Ideal for air-conditioning, cylinder temperature, brake temperature, cooling system temperature  
Batteries included  
Automatic Data Hold  
Set high and low alarms  
Trigger lock



HU135A

MASTER SET FOR FLOW METER COMMON RAIL



Direct measurement of return flow of the injector to check if any injector is damaged  
Simultaneous measurement of up to 6 injectors possible  
Set includes 24pcs injector adaptors : apply for BOSCH, SIEMENS, DENSO and DELPHI injectors

AB70896

UNIVERSAL TIMING GEAR CLAMP FOR DUAL CAM ENGINES



Holds valve timing on overhead cam engines during timing belt service  
Suits timing gear diameters from 101 to 152mm  
Suits gear spacing from 1.6 to 76mm  
Patented 'Uni-fit' tooth design suits a large range of cam gear sizes  
Patented friction locking system allows infinite locking positions to suit most cam gear configurations

AB70900

UNIVERSAL TIMING GEAR CLAMP MASTER SET



Holds valve timing on overhead cam engines during timing belt service  
Includes 1 dual CamClamp and 4 single CamClamp  
Use on single, dual or quad cam engines  
Singles ideal for Diesel injection pump belt replacement  
AB70905: four single cam clamps set available separately

AB70905

UNIVERSAL TIMING GEAR CLAMP SET



Holds valve timing on overhead cam engines during timing belt service  
Includes 4 single CamClamps and 4 bolt extensions  
Patented 'Uni-fit' tooth design suits a large range of varying cam gear sizes  
Ideal for Diesel injection pump belt replacement

## Engine

AB70906

### UNIVERSAL TIMING GEAR HOLDER



Used to hold the gear while the cam shaft bolt is removed  
Allows adjustment of cam gear once installation is complete  
Slimline design allows maximum access  
Single lever design is quick and easy to use  
Provides breaker bar strength for maximum holding force

AB71615

### GEARLOCK KIT



Universal : Can be used on most vehicle makes and models with timing belts and provides cover for most all single, twin and quad can engines

Eliminates the need for multiple engine specific kits  
Quick to install, very positive locking  
Dual Cam GearLock has patented 'Multi-Point' adjustment for positive fit on all gear diameters  
Horizontal and vertical adjustments provides cover over greater gear diameter range  
Spring loading reduces set up time  
Single Cam Gearlock features a new wedge shape profile with handle  
Made of heat treated forged steel and high strength fiber glass reinforced polymer  
Ideal for limited access situations

AB71620A

### TIMING BELT SERVICE KIT



Timing Gear Holder adjusts and locks onto cam gear (from 10 to 15cm) to prevent rotation when removing and installing mounting bolt (made of fibre glass reinforced nylon and heat treated forged steel)  
Heat treated steel Seal Remove Tool with hooks to be inserted into seal then puller is applied to easily remove old seal  
Fibre glass reinforced nylon Seal Install Tools that accommodates seal sizes from 1,9 to 6,3cm diameter  
Reminder : Advantages of fibre glass nylon over alloy : Light weight, high strength, won't bend if dropped  
The most complete kit on the market : contains all tools required to complete timing belt service including seal replacement  
Kit contents:  
Dual Cam Gear Lock (see features above : AB71615)  
Single Cam Gear Lock x 4 (see features above : AB71615)  
Timing Gear Holder  
Oil Seal Remove Tools

## Engine

**AB70906B**

### UNIVERSAL TIMING GEAR HOLDER (NYLON)



Constructed from super strong fibre reinforced polymer  
Used to hold the gear while the cam shaft bolt is removed  
Allows adjustment of cam gear once installation is complete  
Slimline design allows maximum access  
Single lever design is quick and easy to use  
Provides breaker bar strength for maximum holding force  
Ideal for camshaft dephaser pulley

**AB71123**

### STUD REMOVER & INSTALLER KIT



Unique design allows the removal and installation of studs without damaging the threads  
Suits most popular metric automotive studs  
Each stud size has one tool for removal and one tool for installation  
Removal tool does not damage threads  
Installation tool allows tightening and torque without thread damage  
KIT INCLUDES:  
M6x1.0  
M8x1.25  
M10x1.25  
M10x1.5 studs

**AB70908B**

### UNIVERSAL TIMING GEAR HOLDER KIT (NYLON)



Complete timing belt service kit  
KIT CONTENTS:  
AB70906B Timing gear holder (Nylon)  
AB70898 CamClamp Singles (4 pc)

# Engine

**AB70961****CAMSHAFT & CRANKSHAFT SEAL TOOL KIT (NYLON)**

Constructed from super strong fibre reinforced polymer  
Universal tool suits all vehicles

7 installation mandrels suit 21.5mm through 64mm seals

Removal : compact puller with unique extracting hooks engage seal for quick removal (2 pairs of hooks)

Installation : interchangeable seal mandrels, use vehicle crank or cam bolt to evenly press seal into position

**AB70990****STRETCH BELT MATE™ KIT**

Stretch Belt Mate™ is the stretch belt tool that requires the least 'man handling' from the technician on the market

Universal Stretch Fit Belt installation and removal tool set

2 pcs: 1 removal tool / 1 installation tool

No adjustment needed

**AB70993****STRETCH BELT MATE™ KIT (NYLON GLAS )**

Made of nylon reinforced with glass fiber

Stretch Belt Mate™ is the stretch belt tool that requires the least 'man handling' from the technician on the market

Universal Stretch Fit Belt installation and removal tool set

2 pcs: 1 removal tool / 1 installation tool

No adjustment needed

The cheapest solution for stretch belt removal and installation

**AB70058****UNIVERSAL CLUTCH ALIGNING TOOL**

Its unique design aligns and assembles clutch on the workbench for easy installation

Suits most vehicles with single plate clutches

**HU41057**

**WRENCH SET FOR PLASTIC OIL DRAIN PLUGS VAG-FORD-BMW-PSA**



Heavy duty design : manufactured from hardened steel  
For VW Group, BMW, Ford and PSA cars  
High-end design guarantees a perfect fit

**AB71180**

**TOYOTA OIL FILTER WRENCH AND DRAINER**



One tool suits all 4, 6 and 8 cylinder Toyota and Lexus vehicles  
Manufactured from chrome vanadium with mirror polish finish  
1/2" square drive and 24mm hex  
Extra heavy duty to withstand high torque required to remove the oil filter housings on these vehicles  
Recommended Tension for Toyota filter housings is 25Nm however, if the housings are over tensioned the force required to remove can exceed 10 times this - This tool has been tested to breaking in excess of 400 Nm

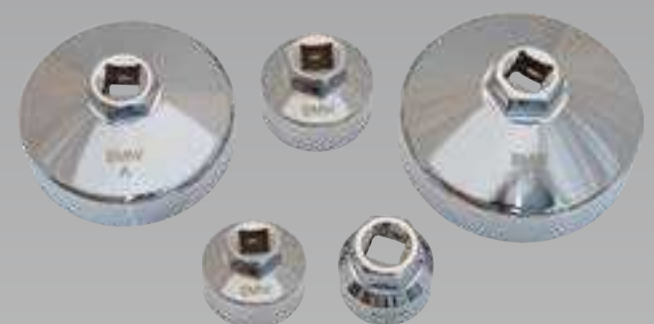
**VW MERCEDES BMW OIL FILTER SET**

Heavy duty design : manufactured from heat treated chrome vanadium steel  
Will not slip and damage nylon oil filter housings  
Will not fail under heavy torque loads required to remove nylon oil filter housings  
Drain hose is used to drain oil from filter housing prior to removal. It prevents oil spills and reduces service time  
Ideal for intensive use

**AB71185AB**  
**VW GROUP OIL FILTER SET**

**AB71260B**  
**MERCEDES OIL FILTER SET**

**AB71275B**  
**BMW OIL FILTER SET**





## Engine

**HU055**

### MASTER FUEL INJECTION PRESSURE TEST KIT



**INCLUDES:**

The most popular adaptors for all types of fuel injection  
A large gauge with dual readings Kpa, Psi from 0 to 1000Kpa (10Bar)  
A low pressure gauge for accurate reading from 0 to 100Kpa (1Bar)  
Quick coupling system

**HU080**

### GAS COMPRESSION TEST KIT



**THE KIT INCLUDES:**

Gauge from 0 to 21Bar  
10-12-14-18mm adaptors and rubber cone adaptors

**HU12001**

### DIESEL COMPRESSION TESTER



For both direct and indirect diesel injected cars  
Test through injector or glow plug

**KIT INCLUDES:**

6 sets (26pcs) of small profile, quick coupling tips and adaptor for speed and security  
Flexible hose (355mm) gives access to restricted plug and injector ports  
Gauge: 0-70Bar

**HU12002**

### DIESEL ENGINE COMPRESSION TEST ADAPTOR SET (CLAMP-ON INJECTORS)



**USE WITH HU12001.**

6 clamp-on injector adaptors covering:  
Car sizes  
Van sizes  
Truck and bus sizes  
Agricultural and marine injector sizes

## Engine

HU12011

SMOKE DIAGNOSTIC MACHINE



Works on:  
Vacuum leaks  
Exhaust leaks  
Crankcase oil leaks  
Wind and water leaks  
Fast and simple to use  
Uses mineral oil and shop air to create smoke (not included)  
Connect to a 12V vehicle battery

HU12012

TURBO SYSTEM TESTER



Delivered with 8 conical caps from 35mm to 90mm  
Caps with rugged surface for a better grip in the tubes  
Includes a gauge with integrated regulator for a better leaks reading  
Allows the technician to pressurize the whole turbo and inlet system in order to detect quickly and accurately potential leaks

HU12016

TURBO SYSTEM TESTER FOR TRUCKS



Delivered with 6 conical caps from 105mm to 130mm  
Caps with rugged surface for a better grip in the tubes  
Includes a gauge with integrated regulator for a better leaks reading  
Allows the technician to pressurize the whole turbo and inlet system in order to detect quickly and accurately potential leaks  
Specially designed for vans and trucks inlet systems

# Engine

**HU35016****CONTROLLED VALVE ACTUATOR (EGR)**

Allows the activation and checks proper operation of the 12-V valves: EGR valves - idle fuel governor – motorised throttles – solenoid valves – turbo variable pressure probes  
 Thanks to its (frequency) output signal, it can also help with valve cleaning using an ultrasonic cleaner  
 The kit includes: 12-V valve tester (EGR etc.), battery power connectors, ergonomic cover (rubber boot), interchangeable lead kit, 2.3-mm female terminal kit (black and red)

**HU35017****GASOLINE INJECTOR TESTER**

Can be used to check each injector individually and detect the following faults: stuck, clogged, or leaking injectors  
 Perfect for operating the injectors during cleaning in an ultrasound tank  
 Powered by the vehicle's 12-V battery  
 Four (pulse) frequency modes  
 The kit includes the fuel injector tester, battery power connectors, interchangeable lead kit, 3-mm female terminal kit (black & red)  
 Also tests the coils and identifies intermittent faults

**HU8000****NON CONTACT TACHOMETER**

Measures RPM from 1 to 99999  
 Kit includes reflective tape to affix to the rotating element to measure  
 Wide measuring range and high resolution  
 Yellow green backlight makes sure that tachometer can work normally in any light circumstance  
 Memory call feature  
 Can be connected 6V direct current stable voltage power in favor of using for long time  
 Low battery voltage indication

**HU8001****CONTACT AND NON CONTACT TACHOMETER**

Combine Photo (non contact) tachometer (RPM) & contact TACH (RPM, m/min) -> easily detachable shaft  
 Measures RPM from 1 to 99999 (non contact) and 0,5 to 19999 (contact) and measures m/min from 0,05 to 1999,9  
 Kit includes reflective tape to affix to the rotating element to measure + contact adapters (3 different RPM adapters + surface speed wheel for m/min)  
 Wide measuring range and high resolution  
 Yellow green backlight makes sure that tachometer can work normally in any light circumstance  
 Memory call feature  
 Can be connected 6V direct current stable voltage power in favor of using for long time  
 Low battery voltage indication  
 New surface speed sensor with flute vials to measure speed and length of wire, cable and rope conveniently

HUDSP12/24

SURGE PROTECTOR 12V/24V



Protects vehicle electronics from voltage spikes during welding or boost starting  
Fuse protection  
Reverse polarity protection  
Easy to use: a green light lights up when the device is properly plugged  
Visual and audible warning

LT0588105

OIL PRESSURE TESTER



Easy to use  
Use to test oil pump pressure, pressure switch and warning indicators  
Quick coupling system

MI5520

COMPRESSION TEST KIT



Excessively high or low readings, or compression readings exceeding manufacturer's specifications from cylinder to cylinder, may indicate an internal engine problem.

UNIT FEATURES:

0-300 p.s.i. (0-21 Bars) test gauge

Hose assembly with replaceable check valve core

14mm long reach adapter

MI5530

MITYVAC GAS COMPRESSION TEST KIT



THIS KIT INCLUDES :

Gauge 0-20Bar / Psi, Bar and Kg/cm<sup>2</sup>

Full assortment of adaptors for most automotive or small engine applications: M10, M12, M14, M18

Air hold adaptor enables valve seal repairs without removing cylinder heads

# Engine

**MI6913****MITYVAC UNIVERSAL BRAKE BLEEDING ADAPTORS****MI8000****MITYVAC VACUUM PLASTIC HAND PUMP KIT**

**KIT INCLUDES:**  
MI8010 vacuum plastic hand pump (0 to -1000 mBar)  
Various accessories for automotive testing or bleeding

**MI8010****VACUUM PLASTIC HAND PUMP**

Made from a PVC compound  
Ergonomically designed handle  
Performs vacuum for automotive testing  
Gauge is angled and swivels 360° for improved visibility  
From 0 mBar to -1000 mBar

**MI8255****VACUUM/PRESSURE PLASTIC HAND PUMP**

Made from a PVC compound  
Ergonomically designed handle  
Performs vacuum and pressure for automotive testing  
Gauge is angled and swivels 360° for improved visibility  
From -980 mBar to 4 Bar

**MI6020**

**MITYVAC TURBO PRESSURE TESTER MANOMETER**



From -1Bar to +3Bar

To be used in conjunction with Mityvac pump MI8550 (quick connection)

Allows to control the maximum pressure of the turbo during a road test

Features a red needle that indicates the maximum pressure reached during the measuring

**MI8510**

**MITYVAC VACUUM/PRESSURE METAL HAND PUMP**



The only hand pump that can produce and measure vacuum OR pressure with equal performance and precision.

Made from an aluminium and zinc compound

Ergonomically designed handle

Single-hand vacuum/pressure release action allows multiple tests without disconnecting

Protective rubber boot surrounds high quality gauge

Gauge is angled and swivels 360° for improved visibility

Better performance : -980 mBar to 4 Bar

**AB80020**

**QUICKDIAL 2-WAY DIAGNOSTIC PUMP KIT**



High quality diagnostic tool

2-Way pressure and vacuum test functions

Patented design

Intuitive rotary dial mode switch

Pistol grip with lever

High volume efficiency

In both pressure and vacuum modes

Manufactured from fiber reinforced composite materials

Very high strength

High impact resistance

Excellent chemical resistance

High quality quick couple fittings and hoses

Quick hose interchange

No leaks under vacuum or pressure

## Engine

MI8550

### MITYVAC METAL HAND PUMP KIT



Mityvac has significantly improved the original Mityvac hand vacuum/pressure pumps used by automotive technicians, service and maintenance professionals, engineers and scientists worldwide. The new Mityvac Silverline Elite hand pump combines 35 years of automotive diagnostic experience with advanced performance and comfort to meet the requirements of the latest automotive technologies. Featured in the new MI8550 Silverline Elite Automotive Test Kit, the pump produces vacuum along with pressure at twice its previous output to expand its vehicle service applications.

Common Applications:

- Emission control systems (EGR, RCV, BPV) testing
- Turbocharger wastegate testing
- Vacuum and pressure brake and hydraulic clutch bleeding
- Ignition system diagnostics



MI8900

### MITYVAC PUMP MAINTENANCE KIT



For Mityvac metal vacuum/pressure pumps.



# Engine

**AB70141****BRAKE CYLINDER HONE**

Range: 19mm to 64mm  
Stones fitted: 28mm medium 220 grit  
Replacement stones available:  
AB70139 (220 grit)  
AB70140 (400 grit)

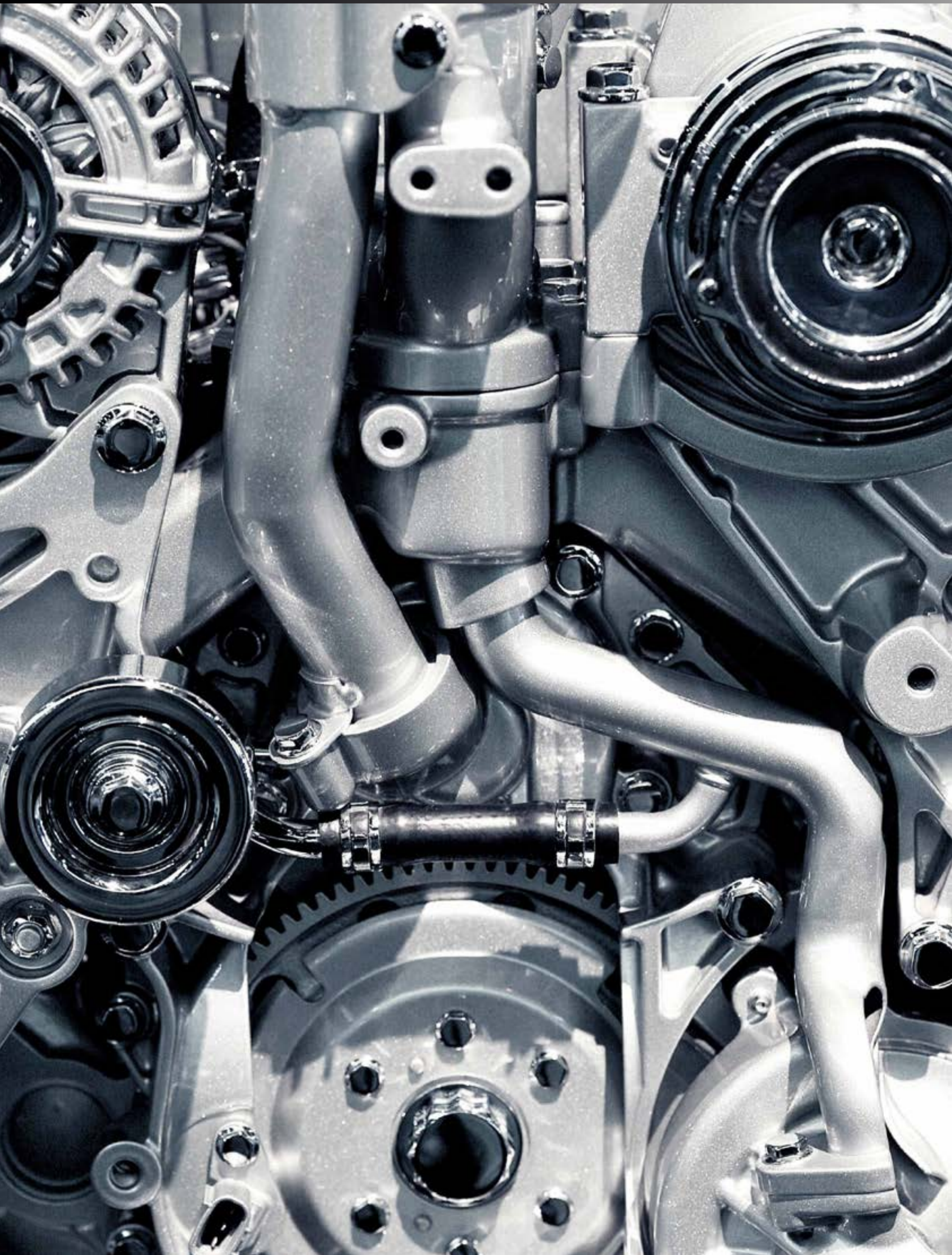
**AB70136****ENGINE CYLINDER HONE**

Range: 51mm to 178mm  
Stones fitted: 102mm medium 220 grit  
Replacement stones available:  
AB70133 (100 grit)  
AB70134 (220 grit)  
AB70135 (400 grit)

**AB70152****SMALL ENGINE CYLINDER HONE**

Range: 32mm to 89mm  
Stones fitted: 51mm medium 220 grit  
Replacement stones available:  
AB70150 (220 grit)  
AB70151 (400 grit)





AB70168

FLEXIBLE ALUMINIUM MAGNETIC PICK-UP TOOL



Bends and holds any position  
Extra-powerful magnet  
Overall length: 552mm

LT4020332B

MINI TELESCOPIC MAGNET & NEEDLE 2 IN 1



MULTI-PURPOSE TOOL:  
Magnet helps picking up small metal parts  
Needle for spray nozzle clean up and adjustment  
Needle can also be used for tracing and marking  
Extends from 140mm to 490mm

CAMG02 - CAMG03

TELESCOPIC MAGNETS



Stainless steel  
Fitted with the "Energy ring" in order to eliminate side pull

HU21002

LIGHTED PICK-UP CLAW



Four claw jaw ideal to pick up non-magnetic objects  
560mm flexible shaft  
1 LED  
Reaches and retrieves in confined and dark areas

HU45097

MAGNETIC FINGER



Assist tool used for retrieval and assembly  
Fasten bolts in difficult places  
Safely hold a nail in place  
Position a screw in a tight spot  
Retrieve hard to hold items  
Attached to one's finger, it will reach places that conventional stick magnets will not

CAMR02

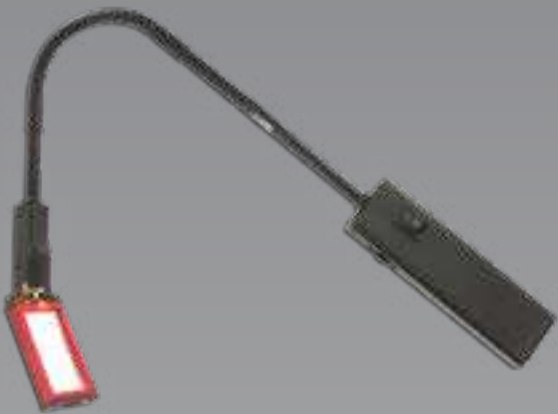
TELESCOPIC MIRRORS



High quality  
Solvent-resistant  
Shatter-resistant

STE05240AB

LIGHTED INSPECTION MIRROR



600mm long flexible shaft  
Thumb controls 90° mirror adjustment  
Powerful lamp to illuminate the dark areas  
STE05515 : bulb  
STE05152 : mirror (30x55 mm)

HOR624

FLEXIBLE INSPECTION MIRROR



Reaches inaccessible, awkward places  
Press-action to bend mirror  
Overall length: 500mm

**HUS309A****METAL DIGITAL CALIPER TOOL**

From 0 to 150mm  
Resolution: 0.01mm  
LCD display 12mm high  
Zero setting at any position  
Metric/inch system interchange

**AB70713****FLEXIBLE LINE CLAMP SET (13-57MM)**

Ideal for flexible brake, fuel and coolant lines (seals heater and radiator hoses)  
Light weight, non conductive highly visible material  
Quick and easy to use  
SET INCLUDES:  
AB70035: 1 small clamp for diameters < 13mm  
AB70533: 1 medium clamp for diameters 13-19mm  
AB70684: 1 large clamp for diameter 19-57mm  
Clamps can be sold separately.

**AB71130 - AB71133****FLEXIBLE LINE CLAMP PLIERS " HEAVY DUTY DESIGN "**

Seal off all flexible lines  
Applications : Automotive (Vacuum lines, Fuel lines, Brake lines, Heater hoses, Radiator hoses, Transmission cooler lines), Industrial (Flexible hydraulic lines, Coolant lines, Fuel lines)  
Ergonomic handle shape for comfort and maximum leverage  
Pivoting jaws to apply parallel crush for optimum sealing  
Spring loaded handles  
Automatic lock release  
Constructed from light weight super strong fibre reinforced polymer

## Hand Tools

**CAMEGA13R**

**MEGAPRO RATCHETING 13 IN 1**



Universal and versatile  
Compact : integrated bits holder with 6 double bits  
Features patent pending ZAD 8 Zinc Alloy SOLID-CORE™ ratchet that delivers over 25.4Nm of torque strength!  
Precision 28-tooth ratchet design makes driving fasteners faster and easier  
Ergonomic grip

**CAMEGA15A**

**MEGAPRO 15 IN 1 SCREWDRIVER**



Universal and versatile  
Compact : integrated bits holder with 7 double bits  
Fits in any trouser or jacket pocket

**HU51001**

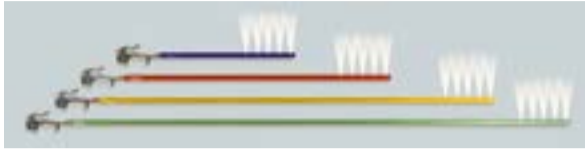
**ASSORTED CASE WITH VARIOUS COMPARTMENTS**



Unique assorted carrying case (300 x 145 x 330 mm / 1,7kg)  
Clear "see through" design  
Easy to select the right box  
Secure locking system  
Easy to remove from the case  
One hand opening  
Belt clip  
Main case with detachable hinge for easy storage in cabinets drawer  
Delivered with no content

HU14011-12-13-14

AIR COMBS



Blows out dust and debris from air filters, radiators, condensers and more!

90° multi-port air flow

Focused high-pressure air output

5x the volume

Accesses hard-to-reach areas

Extends filter life

Use on radiators and condensers

Industries : agriculture, construction, automotive/truck, industrial, stationary and others

MADE OF DURABLE ANODIZED ALUMINIUM

BU371-72-76-78

HOSE CARRIERS



Made of very stable aluminium

For hosepipes, compressed air hoses, wires and all other types of hoses

AB70985

UNIVERSAL SWIVEL AIR COUPLER



Heavy duty design : manufactured from heat treated chrome vanadium steel

Slim design guarantees ease of use

Ideal for intensive use

## Hand Tools

**HU45006**

### BIG SIZED PRY BAR SET (4PCS)



Chrome Molybdenum 16mm steel shafts with satin chrome finish and textured handles  
Contents : 900mm (straight) - 900mm (45°) - 600mm (75°) - 600mm (90°)  
Supplied in plastic storage case

**HU45100**

### GREASE JOINT REJUVENATOR



Have you ever tried to force grease through a grease joint and couldn't? Now you can!  
The patented Grease Joint Rejuvenator® forces light oil into a grease joint, flushing out old hardened grease and allowing new grease to be pushed through.

Instantly opens clogged grease joints  
Cleans ways and stays in milling machines and lathes  
Lubricates and unclogs bearings, control arms, king pins, piston arms, shafts, bushings, etc.  
Can be used on trucks and trailers, industry, construction, excavating, manufacturing, machine shop and well-drilling equipment...

Includes:  
12cm Flex Hose  
Extra Coupler

**HU45074**

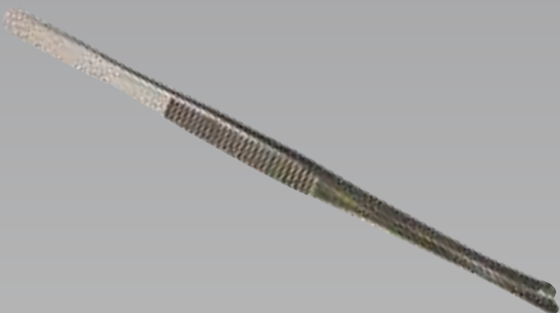
### MINI HOOK & PICK SET (4PCS)



165 mm hook and pick set  
Hardened Chrome, Vanadium shafts  
SET INCLUDES:  
Mini scratch awl  
Mini 90° hook  
Mini curved hook  
Mini complex hook

**HU45105**

### LARGE MANTUS™



High-Quality Surgical Steel Pliers with Serrated Interlocking Hands for Gripping and Biting with Cleaning Capabilities

The MANTUS™ Tight Access Tool is a versatile tool, featuring surgical stainless steel with serrated interlocking hands at the end of a 35cm reach. It bites and grabs wires, gaskets, tubes, tools, terminals, etc. The ends double as an abrasive surface which can be used to scrape corrosion from a variety of surfaces including spade terminals, relays, fuses and more.

Length : 35 cm  
Precise interlocking jaws for a strong grip  
Durable surgical stainless steel construction  
Grips wires, gaskets, tubes, tools, terminals and more  
Also used as terminal cleaners for male spade pins  
Low profile reach

**HU45111**

**IMPACT LITE GLOVE**



Range: 51mm to 178mm  
Stones fitted: 102mm medium 220 grit  
Replacement stones available:  
AB70133 (100 grit)  
AB70134 (220 grit)  
AB70135 (400 grit)



# Hand Tools

**HU52002****PUMP VACUUM SUCTION CUPS (80KG - ABS)**

8" vacuum cup-metal handle  
Ideal for carrying glass, marble, furniture and domestic appliances  
Vacuum leakage indicator with suction quick release button  
Diameter : 200mm  
Loading capacity : 80kg  
Includes protective carry case and protect cover

**HU52004****SINGLE SUCTION LIFTER (ALUMINIUM)**

Ideal for carrying glass, marble, furniture and domestic appliances  
One-hand operation : make vacuum by joining the two handles  
Diameter : 123mm  
Loading capacity : 40kg (GS : 15kg)

**HU52006****DOUBLE SUCTION LIFTER (NICKELED PLATED)**

Suitable for the safe and efficient handling of non-porous materials with smooth flat finishes such as glass, marble, sheet metal, plastics, furniture, domestic appliances...  
Diameter : 2 X 123mm  
Loading capacity : 60kg (GS : 25kg)  
Length : 330mm

**HU52007****TRIPLE SUCTION LIFTER (NICKELED PLATED)**

Suitable for the safe and efficient handling of non-porous materials with smooth flat finishes such as glass, marble, sheet metal, plastics, furniture, domestic appliances...  
Diameter : 3 X 123mm  
Loading capacity : 100kg (GS : 30kg)  
Length : 330mm / 220mm

**HU23074**

**SUPPORT FOR VIDEOSCOPIES AND PRESSURE TESTER**



Attach behind the videoscope thanks to its threaded fastener  
Flexible support (30cm)  
Powerful grip with antiscratch foam

**HU23080**

**EXCLUSIVE VIDEOSCOPE 5.5MM**



The smart choice ! Excellent value for money

Includes every highest end functions for a low cost product

Highest quality on the market:

Videoscope : chock-resistant, glass screen (no plastic, no scratch)

Probes : IP67, water resistant, unique design with chock-resistant and anti-reflection lens

Unique design :

Ergonomic probe connection (probe goes downwards)

Large 3,5" screen (TFT LCD QVGA)

Small and handy with a variety of functions

Semi-rigid DETACHABLE metal shaft, scratch resistant, water- and oil-resistant (IP67)

High brightness LED light source (0-275Lux/6cm) combined with a dimmer

Quick snap and video recording

Zoom : Digital zoom 3x 5x

**HU23085**

**EXCLUSIVE VIDEOSCOPE 4.9MM SWITCH PROBE**



THE SMART CHOICE ! EXCELLENT value for money

Includes every highest end functions for a low cost product

Highest quality on the market:

Videoscope : chock-resistant, glass screen (no plastic, no scratch)

Probes : IP67, water resistant, unique design with chock-resistant and anti-reflection lens

Unique design :

Ergonomic probe connection (probe goes downwards)

Large 3,5" screen (TFT LCD QVGA)

Small and handy with a variety of functions

Semi-rigid DETACHABLE metal shaft, scratch resistant, water- and oil-resistant (IP67)

High brightness LED light source (0-275Lux/6cm) combined with a dimmer

Quick snap and video recording

Zoom : Digital zoom 3x 5x

Mirroring : Complete Mirroring and Rotating (views : normal / mirror / 180° / mirror + 180°)

**HU23105**

**« HANDY » VIDEOSCOPE**



The essential you need with the best dual cameras 4,9mm probe !

Videoscope:

Compact & lightweight

Zoom 1.5 x

High quality 2.4" TFT LCD Monitor with glass protection

AV out port

Very competitive pricing

Probe:

Detachable semi-rigid metal shaft, water and scratch-resistant (IP67) with 4,9mm diameter tip

The «in-line» switch allows to change from side-view to forward-view during the inspection

Two in one shafts : the special tip includes 2 cameras and 2 LED lightsources

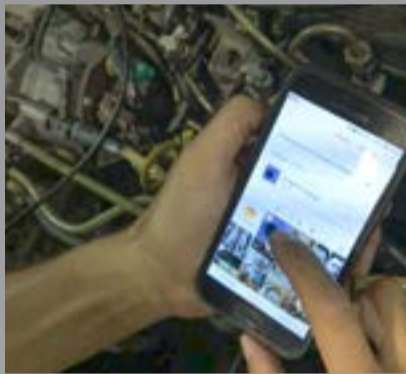
## Inspection Tools

HU23135

WIFI SWITCH PROBE ENDOSCOPE



Fast Wi-Fi connexion to use with smartphones  
Professional device with excellent price for value  
Easy to share pictures and videos through all smartphones applications (Messenger, What-sapp, Email...)  
Space saving : allows maximum freedom of movement  
4,9mm dual camera probe  
Dual Led lights  
105cm semi hard probe  
Perfect resolution for smartphone  
Variety of probe accessories  
Wi-Fi box with magnetic body for ease of use  
Usable for 2 hours with one battery charge  
USB to Micro USB charging cable  
Magnet for smartphone (stick it or slip it between phone and cover)



HU23136

WIFI BORESCOPE



Lightweight 250g  
•4.5mm 180 articulation  
• High resolution : HD 1024x768  
•Smaller diameter : 4.5mm stainless steel camera head containing 5 LEDs  
•180 degrees angle : unilateral bending up to 180 degrees  
•Waterproof & oil proof : protected from immersion in water with a depth of up to 1 meter for up to 30 mins  
•Convenient and timely record test data  
• Brightness adjustment  
• Album preview  
•Snapshot / recording  
• USB to micro USB type-C charging cable



# Inspection Tools

**HU23086****BASE HOLDER FOR ARTICULATED PROBE**

Ideal to inspect areas that are higher or lower by stiffening the probe  
Grip button included in the holder  
Holder dimension : 120mm X 40mm x 40mm  
Steel tube length : 540mm / 990mm  
Weight : 220g  
To be used with 6mm articulated probe (HU23070)

**HU23097****VIDEOSCOPE EXCLUSIVE/ MINI-POLAR PIPE INSPECTION SYSTEM KIT**

28mm IP68 quality camera with 8 bright LED  
10m semi-rigid probe (IP65 quality)  
Depth of field : 10mm to ∞  
Passes through two 90° elbow bends  
Application : building service (construction engineering), heat and air conditioning, water pipe, plumbing, general equipment (tanks, steel pipes), military police (cannonry and gun inspection)...

**KIT INCLUDES:**  
Exclusive videoscope (command box)  
Pipe inspection system (10m long probe)  
Handsfree carrying tray with harness

**HU23102****VIDEOSCOPE EXCLUSIVE/ POLAR PIPE INSPECTION SYSTEM KIT (30M PROBE)**

28 mm IP68 quality camera with 8 bright LED  
30 m semi-rigid probe (IP65 quality)  
Depth of field : 10mm to ∞  
Field of view : 150°  
Passes through two 90° elbow bends  
Application : building service (construction engineering), heat and air conditioning, water pipe, plumbing, general equipment (tanks, steel pipes), military police (cannonry and gun inspection)...

**KIT INCLUDES:**  
Exclusive videoscope (command box)  
Pipe inspection system (30 m long interchangeable probe) with transmitter (512MHz)  
Centring brush (diameter : 100 mm)  
Meter  
Plastic case

## Inspection Tools

**HUX1000**

**HIGH TECH VIDEOSCOPE SYSTEM**



### THE HIGH-END INSPECTION SOLUTION

In Automotive, ideal for test centers, engine labs or dealerships  
Multi-ways to capture pictures : from the system, from the probe or with the remote control  
The kit is delivered in a high quality Air-tight water proof case and includes the main system, the high definition articulated probe 6mm but also a neck strap, a sun visor, a remote control, a 2m holding tube and 3 accessories (70° mirror, dual view mirror and pim porbe)

#### FEATURES:

Clarity: makes the edge of subject sharper

Negative+: checks the leak or crash that can't be inspected carefully with normal light

Boost+: if the normal boost is still not satisfying, use Boost+ directly

Particle free: mirror reflects particles on the image, this feature erases these particles for a clearer inspection

Anti-reflection: Reduces reflection on shiny metal or mirror surface



**HUX1004**

**HIGH TECH VIDEOSCOPE SYSTEM 2M - 4 WAYS**



In Automotive, ideal for test centers, engine labs or dealerships

Multiple ways to capture pictures : from the system, from the probe or with the remote control

The kit is delivered in a high quality airtight waterproof case and includes main system, 4ways-2m long probe, 2m holding tube (+ connector and thread protection), remote control, sun visor, 6mm dual view mirror, pin probe, neck strap, USB cable, AV cable, 4GB SD card, plug charger, cleaning kit and installation CD

#### PROBE FEATURES:

Fast and easy joystick operation: Provides snapshot (freeze image), "light boost +" and "light -" functions on the controller

Stainless steel braided tube : Durable, rust and temperature resistant 360° articulation: Provides full flexibility for narrow space inspection

Dust/water protection: IP55



## Inspection Tools

HU21045

POCKET FLOODLIGHT WITH MAGNET 360



Incredibly tough aluminium housing with a sturdy 360° swivel handle/base  
Virtually indestructible and one of the most durable floodlights available  
Also fitted with a strong magnet, making it simple and easy to direct  
Up to 700 lumens of light  
Three light output settings : 100/350/700 lumens  
Features three LED battery level indicator  
Fitted with a high quality 3.7V 2.6Ah Li-ion battery  
Charges via a mini USB  
Battery : 3.7V 2.6Ah Li-ion  
Charging time : 4hr  
IP rating : IP65  
LED Qty : 7W COB LED  
Length : 95mm  
Lumen output : low : 100lm / mid : 350lm / high : 700lm  
Nett weight : 255g  
Operating time : low : 10hr / mid:4hr / high : 2hrv



# Inspection Tools

**STE15150A****HIGH INTENSITY FLEXIBLE INSPECTION LIGHT**

Goes where ordinary lights won't fit  
Protective cover can also be used as an extension  
Alkaline batteries included  
Shaft diameter : 5mm

**STE10150A****SINGLE SUCTION LIFTER (ALUMINIUM)**

Goes where ordinary lights won't fit  
Protective cover can also be used as an extension  
Alkaline batteries included  
Shaft diameter : 5mm

**STE96285****BEND-A-LIGHT LED PRO**

Goes where ordinary lights won't fit  
600 mm long  
5mm diameter shaft  
Flexible brass alloy shaft holds the desired position and shape  
Protective cover can also be used as an extension  
Industrial grade On/Off switch  
Improved anodized aluminum housing is corrosion resistant  
3 X AA batteries included  
STE96402 : replacement bulb with a 50,000h life time

## Inspection Tools

HU21042

### SLIM LIGHT RECHARGEABLE INSPECTION LIGHT



Ergonomic handle design  
Can be charged directly on the USB port in the car  
Rating : 12V DC  
Output : 5V / 1A  
LED: 0,5W, 9pcs, white (5500k)  
Luminous flux : 242Lm  
Battery : Li-ion 3,7V 2200mA rechargeable (3,5hours fully charging for 5 hours illumination)  
Accessory : HU21042-1 magnet holder (not included)USB charger  
Logo design can be added to the LED indicate lamp

HU21043

### ADJUSTABLE SLIM LIGHT



DESIGN :  
Slim body design ideal for vehicle inspection under limited space  
Soft touch  
Ergonomic handle with comfort grip  
Made of nylon and fiber, acrylic lens  
Length: 375mm / thickness: 9mm  
Two fixations : Swivel hanging hook & Ball joint design swivel base with powerful magnet  
Charging indicator :  
In charging mode = red indicator flashes  
Charge completed = blue indicator lights on  
Low battery = yellow indicator flashes  
INNOVATION : DIMMER  
For progressive lighting (no blinding)  
To adapt light intensity to the environment (reflection...)

HU21016

### MINI LED LIGHT



Ultra slim penlight  
High intensity and long-lasting LED light  
Easy and convenient carry

STE78834

### SLIM RECHARGEABLE HEAD LAMP



10 SMD LED Output emitting 250Lumens  
3 modes (250 lm for 3h - 120 lm for 4h 30mins - 60 lm for 9 hours)  
Ergonomically shaped board that fits the contours of your head  
Headlamp: pivoting head  
Motion Sensor: Motion sensing mode to turn light on/off without touching the headlamp  
Li-ion Battery: Rechargeable Li-ion battery pack  
Folding clips to secure headband to a hard hat





**AB70910**

### RATCHET PUMP



Convert your 3/8" drive air ratchet into a fluid transfer pump

Ideal for:

Brake fluid

Power steering fluid

Transmission fluid

Engine oil

Coolant

Gear oils

Retaining bracket holds pump during use for one-hand operation for increased safety

Quick couple fittings allow easy hose changes

**AB71196**

### QUICKFLOW PUMP KIT



The Quickflow pump is a high efficiency gear type pump

It is fitted with a folding engagement bracket to allow the pump to be driven by a 3/8 air ratchet

Made of heavy duty internal components to make it suitable for running at high speeds

Using the included universal adaptor allows the pump to be driven by most all cordless drills to provide high flow rates

Suitable for use with most fluids (not gasoline) used in automotive, marine, industrial and domestic applications

Gears made of fiberglass reinforced nylon with moulded rubber tips for improved priming

Steel gear shafts and brass bushings

Will run at 1,500 RPM for extended periods

Suitable for transferring fluids up to 80°C

**AB71197**

### QUICKFLOW DRILL PUMP TRANSMISSION KIT



The QuickFlow pump is a high efficiency gear type pump

It is fitted with a folding engagement bracket to allow the pump to be driven by a 3/8 air ratchet

Using the included universal adaptor allows the pump to be driven by most all cordless drills

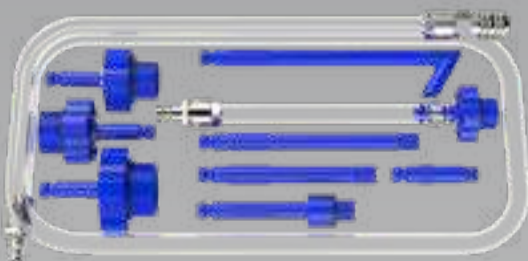
Adaptors used with AB71196 QuickFlow Drill Pump to efficiently refill sealed Automatic Transmissions.

Included Pressure Hose with quick couple fittings for quick adaptor interchange

Adaptors manufacture from high strength fibre reinforced polymer with extreme chemical resistance

**AB71201**

### QUICKFLOW TRANSMISSION REFILL ADAPTOR KIT



Adaptors used with AB71196 QuickFlow Drill Pump to efficiently refill sealed Automatic Transmissions.

Included Pressure Hose with quick couple fittings for quick adaptor interchange

Adaptors manufacture from high strength fibre reinforced polymer with extreme chemical resistance

# Fluid Transfer

**HU46008****THE CLEAN SYRINGE FOR VEHICLE OIL CHANGE (XL/1.5L)**

Transparent design to visualise the fluid  
Suitable for fluid suction and supply in vehicle service  
Designed for transmission fluid, gear oil and engine oil (not ATF)  
Features cap to avoid dripping  
Rotative switch off  
CAPACITY : 0,9kg / 1,5L capacity

**HU46009****THE CLEAN SYRINGE FOR VEHICLE FLUID CHANGE (200CC)**

Transparent design to visualise the fluid  
Suitable for fluid suction and supply in vehicle service  
Designed for brake fluids and antifreeze  
Features cap to avoid dripping  
Quick disconnect tube  
0,294kg / 200cc capacity

**HU46011****FUEL SYRINGE**

Transparent design to visualise the fluid  
Suitable to add or remove gasoline or diesel fuel from filters, etc.  
Rotative switch off  
1,5L capacity

HU46012

AD BLUE SYRINGE



Transparent design to visualise the fluid  
Suitable to add or remove AD Blue liquid from reservoir tanks  
Rotative switch off  
1,5L capacity

HU46021

AD BLUE FUNNEL 45°



AdBlue funnels fit to all AdBlue system.  
Pull valve design to start refilling once pull it open.  
Transparent funnel with graduation (until 1100ml) to see fluid level  
Shut off valve when disconnecting the funnel from spillage of AdBlue  
Allows a clean job : no spillage on body or interior  
Also comes in straight design for different type of filling neck

HU46022

AD BLUE FUNNEL STRAIGHT



AdBlue funnels fit to all AdBlue system.  
Pull valve design to start refilling once pull it open.  
Transparent funnel with graduation (until 1100ml) to see fluid level  
Shut off valve when disconnecting the funnel from spillage of AdBlue  
Allows a clean job : no spillage on body or interior  
Also comes in 45° angle design for different type of filling neck

## Fluid Transfer

**HU46005**

**FUEL EXTRACTOR**



To retrieve fuel following a filling error (gasoline instead of diesel, etc.), remove a submerged fuel pump, change or check the fuel gauge, rinse the fuel tank, during body work, etc.

Operates off workshop compressed air (no risk of sparks)

Mobile 45-litre tank (on wheels)

Cleanly draws up or pushes out fuel thanks to a venturi system

2 anti-static ground cables, overflow line and 3 fuel probes

Emptying via the tank filler neck or fuel lines

Made of stainless steel

Meets the ATEX standards



**HU46010**

**ADAPTORS FOR HU46005 FUEL EXTRACTOR**



Allow to plug the fuel extractor (HU46005) in line just before the injection pump (on almost every line or filter) for a completely safe emptying.



## Fluid Transfer

MI5800

### AUTOMATIC TRANSMISSION REFILLING KIT



Adapters designed for refilling or topping-off most manufacturers' sealed automatic transmissions when the fluid level is low or following a filter change (when no transmission dipstick tube)  
Includes 10 adapters fitting Ford, Toyota, BMW, Honda, Nissan, VW, Audi and Mercedes transmissions  
Adapters all have quick-connect coupler system

MI6400

### MITYVAC FLUID DISPENSING SYSTEM



Large 5 liters fluid capacity  
Fluid is dispensed under pressure for smooth continual flow  
Integrated manual pump adds air above the fluid level to prevent aeration  
Internal pump components are sealed against exposure to fluids  
On/Off and flow control valve are conveniently located near fluid output  
Pressure gauge indicates fluid dispensing pressure  
Integrated safety and manual pressure relief valve  
KIT INCLUDES:  
5 liters fluid reservoir  
Reservoir lid w/integrated manual pump, Pressure gauge and pressure relief valve  
Fluid dispensing hose w/flow control and Auto-shutoff valves  
Fluid dispensing wand  
Hanging hook

MI6403

### GEAR BOX REFILLING PUMP KIT (5L)



Levelling of all kind of fluid  
Dispenses fluids to fill or top-off master cylinders, coolant bottles, automatic transmissions, differentials, power steering and other reservoirs.  
Sealed automatic transmissions  
Used to dispense fluid to top-off or refill sealed automatic transmissions  
Includes 10 specific adaptors  
Return flow valve  
Brake bleeding (clutch)  
FEATURES:  
Large 5 liter fluid capacity  
Fluid under pressure for smooth continual flow  
Integrated manual pump adds air above the fluid level to prevent aeration  
Sealed internal pump components

MI6413

### GEAR BOX REFILLING PUMP KIT (10L)



Levelling of all kind of fluid  
Sealed automatic transmissions  
Brake bleeding (clutch)  
FEATURES:  
Large 10 liter fluid capacity  
Fluid under pressure for smooth continual flow  
Integrated manual pump adds air above the fluid level to prevent aeration  
Sealed internal pump components  
On/Off and flow control valve are conveniently located near fluid output  
Gauge indicates fluid dispensing pressure  
Integrated safety and manual pressure relief valve  
KIT INCLUDES:  
Mityvac fluid dispensing system

# Fluid Transfer

**MI7201****MITYVAC MANUAL VACUUM AND PRESSURE FLUID EVACUATOR**

Extracts and dispenses a wide-range of fluid types including engine oil, brake fluid, gear oil, coolant...  
Reservoir capacity: 8.8 litres  
Includes 3 semi-rigid probes with various diameters

**MI7240****FLUID TRANSFER PUMP**

Quick and easy method to transfer or syphon all types of fluids including fuel, oil, transmission fluid, water, etc.

**MI7300****PNEUMATIVAC - AIR OPERATED FLUID EVACUATOR**

Extracts most automotive liquids including, transmission, brake fluid, coolant, gear and engine oil in just over 1 minute.

Provides a clean, fast and simple way to evacuate a wide range of fluids

Durable polyethylene construction is impervious to automotive and household chemicals

Air shut off valve allows unit to be used away from air source

Automatic shut off valve prevents overfilling-automatically shuts off at 8 liters

Large capacity 8.8 liters fluid reservoir

Includes flexible hoses, dipstick tubes for engine oil removing, hose assembly with in-line fluid shut off valve and universal adapter for brake bleeding

***Hubitools***  
INNOVATIVE TOOL EXPERTS

WWW.HUBITOOLS.COM  
CUSTOMER.SERVICE@HUBITOOLS.COM  
+32 (0) 10 42 03 85

