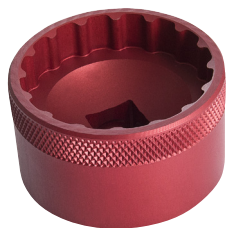


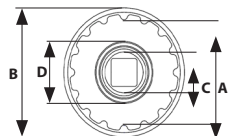
EXTERNAL BOTTOM BRACKET SOCKETS



All models of bottom bracket sockets are precision CNC machined tools for installation and removal of different external bottom bracket cups. They are made of aluminum billet and anodized red for durable finish and precise fit, that won't damage aluminum external bottom bracket cups. Knurling on the side of the socket creates better grip when threading cups by hand, meanwhile 1/2" square drive makes it easy to use with torque wrenches, ratchets and fixed handles.

GLOBAL		Unior bottom bracket sockets specifications					
Code	Art.		# Notches	Notch diameter	Socket diameter	Guide diameter	Guide adapter
627621	1671.BSA30	Bottom bracket socket BSA30	12	44,2	53	/	/
627620	1671.BBR60	Bottom bracket socket BBR60	16	39	47	/	/
627619	1671.BB9000	Bottom bracket socket BB9000	16	39,4	45	/	/
627622	1671.MEvo	Bottom bracket socket MegaEVO	16	46,4	56	/	/
627623	1671.16N	Bottom bracket socket 16 Notch	16	42,7	52	/	/
628495	1671.T47	Bottom bracket socket T47	16/12	49/46,6	60/60	23,8/23,8	28,8/29,8*

*Adapter is exchangeable and can be used on both sides



- A = Notch diameter
- B = Socket diameter
- C = Guide diameter
- D = Guide adapter diameter

Bottom bracket		Unior tool					
Manufacturer	Model	1671.BSA30	1671.BBR60	1671.BB9000	1671.MEvo	1671.16N	1671.T47
Campagnolo	Fits most models					x	
Chris King	Fits most models					x	
Chris King	Thread fit T47 30l & 24l						x
Chris King	Thread fit T47 30X & 24X						x
Enduro	T47 with OD 52.2 mm						x
Enduro	TorqueTite PF30 with OD 52.2 mm						x
FSA	MegaEvo				x		
FSA	MegaExo					x	
Praxis	T47*						x
Race Face	Cinch	x					
Race Face	X-Type					x	
Rotor	BSA30						
Shimano	BBR60		x				
Shimano	Dura-Ace 9000			x			
Shimano	Hollowtech II					x	
Shimano	MT60		x				
Shimano	XTR BB93			x			
SRAM	DUB T47						x
SRAM	DUB	x					
SRAM/Truvativ	GXP					x	
Zipp	Yuma	x					
Hawk Racing	BB3086	x					
Wheels Mfg	PF30				x		
Wheels Mfg	T47						x